

MAD2 Polyclonal Antibody

Description

Product type	Primary Antibody
Code	BT-AP05148
Host	Rabbit
Isotype	IgG
Size	20ul, 50ul, 100ul
Immunogen	The antiserum was produced against synthesized peptide derived from human MAD2L1. AA range:91-140
Mol wt	23510
Species reactivity	Human
Clonality	Polyclonal
Recommended application	WB, ELISA
Concentration	1 mg/ml
Full name	MAD2 Antibody
Synonyms	MAD2L1; MAD2; Mitotic spindle assembly checkpoint protein MAD2A; HsMAD2; Mitotic arrest deficient 2-like protein 1; MAD2-like protein 1

This product is for research use only, not for use in human, therapeutic or diagnostic procedure.

Background

MAD2L1 is a component of the mitotic spindle assembly checkpoint that prevents the onset of anaphase until all chromosomes are properly aligned at the metaphase plate. MAD2L1 is related to the MAD2L2 gene located on chromosome 1. A MAD2 pseudogene has been mapped to chromosome 14.

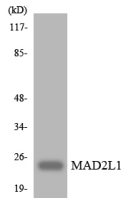
Recommended Dilution

WB: 1: 500 - 1: 2000

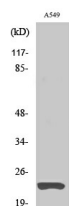
ELISA: 1: 5000

Not yet tested in other applications.

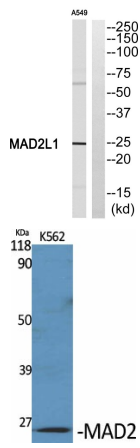
Images



Western blot analysis of the lysates from HUVEC cells using MAD2L1 antibody.



Western Blot analysis of A549 cells using MAD2 Polyclonal Antibody diluted at 1:1000



Western blot analysis of MAD2L1 Antibody. The lane on the right is blocked with the MAD2L1 peptide.

Western Blot analysis of various cells using MAD2 Polyclonal Antibody diluted at 1:1000

Storage

-20°C for one year

501 Changsheng S Rd, Nanhu Dist, Jiaxing, Zhejiang, China

Tel: 86 21 31007137 | E-mail: save@bt-laboratory.com | www.bt-laboratory.com