

## MAD2L1BP Polyclonal Antibody

### Description

Product type	Primary Antibody
Code	BT-AP05149
Host	Rabbit
Isotype	IgG
Size	20ul, 50ul, 100ul
Immunogen	Synthesized peptide derived from MAD2L1BP . at AA range: 10-90
Mol wt	31052
Species reactivity	Human
Clonality	Polyclonal
Recommended application	WB, ELISA
Concentration	1 mg/ml
Full name	MAD2L1BP Antibody
Synonyms	MAD2L1BP; CMT2; KIAA0110; MAD2L1-binding protein; Caught by MAD2 protein

This product is for research use only, not for use in human, therapeutic or diagnostic procedure.

### Background

The protein encoded by MAD2L1BP (MAD2L1 binding protein) was identified as a binding protein of the MAD2 mitotic arrest deficient-like 1 (MAD2/MAD2L1). MAD2 is a key component of the spindle checkpoint that delays the onset of anaphase until all the kinetochores are attached to the spindle. This protein may interact with the spindle checkpoint and coordinate cell cycle events in late mitosis. Alternatively spliced transcript variants encoding distinct isoforms have been observed.

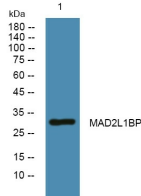
### Recommended Dilution

WB: 1: 500 - 1: 2000

ELISA: 1: 10000

Not yet tested in other applications.

### Images



Western blot analysis of lysates from SH-SY5Y cells, primary antibody was diluted at 1:1000, 4° over night

### Storage

-20°C for one year