

MADD Polyclonal Antibody

Description

Product type	Primary Antibody
Code	BT-AP05151
Host	Rabbit
Isotype	IgG
Size	20ul, 50ul, 100ul
Immunogen	The antiserum was produced against synthesized peptide derived from human MADD. AA range:751-800
Mol wt	183303
Species reactivity	Human, Mouse, Rat
Clonality	Polyclonal
Recommended application	WB, IHC-p, IF, ELISA
Concentration	1 mg/ml
Full name	MADD Antibody
Synonyms	MADD; DENN; IG20; KIAA0358; MAP kinase-activating death domain protein; Differentially expressed in normal and neoplastic cells; Insulinoma glucagonoma clone 20; Rab3 GDP/GTP exchange factor

This product is for research use only, not for use in human, therapeutic or diagnostic procedure.

Background

Tumor necrosis factor alpha (TNF-alpha) is a signaling molecule that interacts with one of two receptors on cells targeted for apoptosis. The apoptotic signal is transduced inside these cells by cytoplasmic adaptor proteins. MAP kinase-activating death domain protein encoded by MADD is a death domain-containing adaptor protein that interacts with the death domain of TNF-alpha receptor 1 to activate mitogen-activated protein kinase (MAPK) and propagate the apoptotic signal. It is membrane-bound and expressed at a higher level in neoplastic cells than in normal cells. Several transcript variants encoding different isoforms have been described for this gene.

Recommended Dilution

WB: 1: 500 - 1: 2000

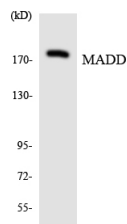
IHC: 1: 100 - 1: 300

IF: 1: 200 - 1: 1000

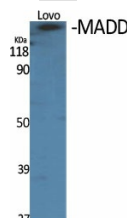
ELISA: 1: 5000

Not yet tested in other applications.

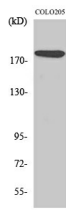
Images



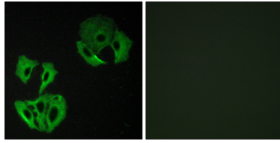
Western blot analysis of the lysates from HepG2 cells using MADD antibody.



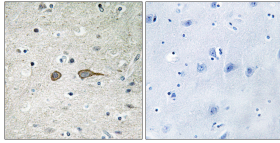
Western Blot analysis of various cells using MADD Polyclonal Antibody diluted at 1:1000



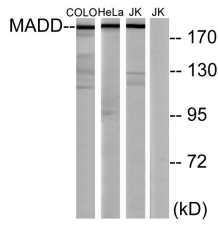
Western Blot analysis of Jurkat cells using MADD Polyclonal Antibody diluted at 1:1000



Immunofluorescence analysis of A549 cells, using MADD Antibody. The picture on the right is blocked with the synthesized peptide.



Immunohistochemistry analysis of paraffin-embedded human brain tissue, using MADD Antibody. The picture on the right is blocked with the synthesized peptide.



Western blot analysis of lysates from COLO, HeLa, and Jurkat cells, using MADD Antibody. The lane on the right is blocked with the synthesized peptide.

Storage

-20°C for one year

501 Changsheng S Rd, Nanhu Dist, Jiaxing, Zhejiang, China

Tel: 86 21 31007137 | E-mail: save@bt-laboratory.com | www.bt-laboratory.com