

## MAG Polyclonal Antibody

### Description

<b>Product type</b>	Primary Antibody
<b>Code</b>	BT-AP05157
<b>Host</b>	Rabbit
<b>Isotype</b>	IgG
<b>Size</b>	20ul, 50ul, 100ul
<b>Immunogen</b>	The antiserum was produced against synthesized peptide derived from the C-terminal region of human MAG. AA range:501-550
<b>Mol wt</b>	69069
<b>Species reactivity</b>	Human, Mouse, Rat
<b>Clonality</b>	Polyclonal
<b>Recommended application</b>	WB, ELISA
<b>Concentration</b>	1 mg/ml
<b>Full name</b>	MAG Antibody
<b>Synonyms</b>	MAG; GMA; Myelin-associated glycoprotein; Siglec-4a

**This product is for research use only, not for use in human, therapeutic or diagnostic procedure.**

### Background

Myelin-associated glycoprotein encoded by MAG is a type I membrane protein and member of the immunoglobulin superfamily. It is thought to be involved in the process of myelination. It is a lectin that binds to sialylated glycoconjugates and mediates certain myelin-neuron cell-cell interactions. Three alternatively spliced transcripts encoding different isoforms have been described for this gene.

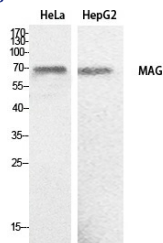
### Recommended Dilution

WB: 1: 500 - 1: 2000

ELISA: 1: 20000

Not yet tested in other applications.

### Images



Western Blot analysis of HeLa, HepG2 cells using MAG Polyclonal Antibody. Secondary antibody was diluted at 1:20000

### Storage

-20°C for one year