

MAGE-A5 Polyclonal Antibody

Description

Product type	Primary Antibody
Code	BT-AP05183
Host	Rabbit
Isotype	IgG
Size	20ul, 50ul, 100ul
Immunogen	The antiserum was produced against synthesized peptide derived from human MAGEA5. AA range:68-117
Mol wt	13016
Species reactivity	Human
Clonality	Polyclonal
Recommended application	WB, ELISA
Concentration	1 mg/ml
Full name	MAGE-A5 Antibody
Synonyms	MAGEA5; MAGE5; Melanoma-associated antigen 5; Cancer/testis antigen 1.5; CT1.5; MAGE-5 antigen

This product is for research use only, not for use in human, therapeutic or diagnostic procedure.

Background

MAGEA5 is a member of the MAGEA gene family. The members of this family encode proteins with 50 to 80% sequence identity to each other. The promoters and first exons of the MAGEA genes show considerable variability, suggesting that the existence of this gene family enables the same function to be expressed under different transcriptional controls. The MAGEA genes are clustered at chromosomal location Xq28. They have been implicated in some hereditary disorders, such as dyskeratosis congenita. This MAGEA gene encodes a protein that is C-terminally truncated compared to other family members, and this gene can be alternatively interpreted to be a pseudogene. The protein is represented in this Gene record in accordance with the assumed protein-coding status defined in the literature. Read-through transcription exists between this gene and the upstream melanoma antigen family A, 10 (MAGEA10) gene.

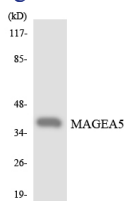
Recommended Dilution

WB: 1: 500 - 1: 2000

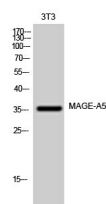
ELISA: 1: 10000

Not yet tested in other applications.

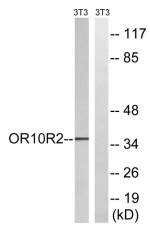
Images



Western blot analysis of the lysates from K562 cells using MAGEA5 antibody.



Western Blot analysis of 3T3 cells using MAGE-A5 Polyclonal Antibody



Western blot analysis of lysates from NIH/3T3 cells, using MAGEA5 Antibody. The lane on the right is blocked with the synthesized peptide.

Storage

-20°C for one year

501 Changsheng S Rd, Nanhu Dist, Jiaxing, Zhejiang, China

Tel: 86 21 31007137 | E-mail: save@bt-laboratory.com | www.bt-laboratory.com