

MAGE-C2 Polyclonal Antibody

Description

| | |
|--------------------------------|---------------------------------------------------------------------------------------------------------------------------------------------------------------------------|
| Product type | Primary Antibody |
| Code | BT-AP05184 |
| Host | Rabbit |
| Isotype | IgG |
| Size | 20ul, 50ul, 100ul |
| Immunogen | Synthesized peptide derived from MAGE-C2 . at AA range: 160-240 |
| Mol wt | 41163 |
| Species reactivity | Human |
| Clonality | Polyclonal |
| Recommended application | WB, ELISA |
| Concentration | 1 mg/ml |
| Full name | MAGE-C2 Antibody |
| Synonyms | MAGEC2; HCA587; MAGEE1; Melanoma-associated antigen C2; Cancer/testis antigen 10; CT10; Hepatocellular carcinoma-associated antigen 587; MAGE-C2 antigen; MAGE-E1 antigen |

This product is for research use only, not for use in human, therapeutic or diagnostic procedure.

Background

MAGEC2 is a member of the MAGEC gene family. It is not expressed in normal tissues, except for testis, and is expressed in tumors of various histological types. MAGEC2 and the other MAGEC genes are clustered on chromosome Xq26-q27.

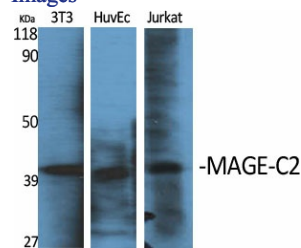
Recommended Dilution

WB: 1: 500 - 1: 2000

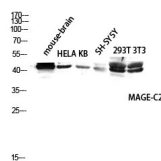
ELISA: 1: 5000

Not yet tested in other applications.

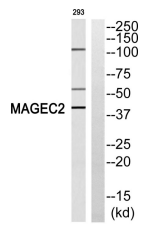
Images



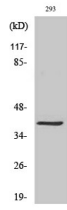
Western Blot analysis of various cells using MAGE-C2 Polyclonal Antibody diluted at 1:1000



Western blot analysis of mouse-brain HELA KB SH-SY5Y 293T 3T3 lysis using MAGE-C2 antibody. Antibody was diluted at 1:1000



Western blot analysis of MAGEC2 Antibody. The lane on the right is blocked with the MAGEC2 peptide.



Western Blot analysis of 293 cells using MAGE-C2 Polyclonal Antibody diluted at 1:1000

Storage

-20°C for one year

501 Changsheng S Rd, Nanhu Dist, Jiaxing, Zhejiang, China

Tel: 86 21 31007137 | E-mail: save@bt-laboratory.com | www.bt-laboratory.com