

MAGI-2 Polyclonal Antibody

Description

Product type	Primary Antibody
Code	BT-AP05188
Host	Rabbit
Isotype	IgG
Size	20ul, 50ul, 100ul
Immunogen	The antiserum was produced against synthesized peptide derived from human MAGI2. AA range:221-270
Mol wt	25091
Species reactivity	Human, Mouse, Rat
Clonality	Polyclonal
Recommended application	WB, IHC-p, ELISA
Concentration	1 mg/ml
Full name	MAGI-2 Antibody
Synonyms	MAGI2; ACVRINP1; AIP1; KIAA0705; Membrane-associated guanylate kinase; WW and PDZ domain-containing protein 2; Atrophin-1-interacting protein 1; AIP-1; Atrophin-1-interacting protein A; Membrane-asso

This product is for research use only, not for use in human, therapeutic or diagnostic procedure.

Background

The protein encoded by MAGI2 (membrane associated guanylate kinase, WW and PDZ domain containing 2) interacts with atrophin-1. Atrophin-1 contains a polyglutamine repeat, expansion of which is responsible for dentatorubral and pallidolusian atrophy. This encoded protein is characterized by two WW domains, a guanylate kinase-like domain, and multiple PDZ domains. It has structural similarity to the membrane-associated guanylate kinase homologue (MAGUK) family.

Recommended Dilution

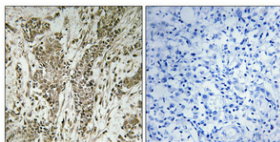
WB: 1: 500 - 1: 2000

IHC: 1: 100 - 1: 300

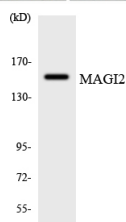
ELISA: 1: 20000

Not yet tested in other applications.

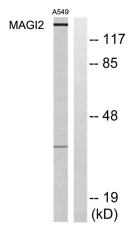
Images



Immunohistochemical analysis of paraffin-embedded Human breast cancer. Antibody was diluted at 1:100(4° overnight). High-pressure and temperature Tris-EDTA,pH8.0 was used for antigen retrieval. Negative contrl (right) obtained from antibody was pre-absorbed by immunogen peptide.



Western blot analysis of the lysates from 293 cells using MAGI2 antibody.



Western blot analysis of lysates from A549 cells, using MAGI2 Antibody. The lane on the right is blocked with the synthesized peptide.

Storage

-20°C for one year

501 Changsheng S Rd, Nanhu Dist, Jiaxing, Zhejiang, China

Tel: 86 21 31007137 | E-mail: save@bt-laboratory.com | www.bt-laboratory.com