

Mammaglobin B Polyclonal Antibody

Description

Product type	Primary Antibody
Code	BT-AP05196
Host	Rabbit
Isotype	IgG
Size	20ul, 50ul, 100ul
Immunogen	The antiserum was produced against synthesized peptide derived from human Mammaglobin B. AA range:10-59
Mol wt	10884
Species reactivity	Human
Clonality	Polyclonal
Recommended application	WB, IHC-p, IF, ELISA
Concentration	1 mg/ml
Full name	Mammaglobin B Antibody
Synonyms	SCGB2A1; LIPHC; MGB2; UGB3; Mammaglobin-B; Lacryglobin; Lipophilin-C; Mammaglobin-2; Secretoglobin family 2A member 1

This product is for research use only, not for use in human, therapeutic or diagnostic procedure.

Background

SCGB2A1 is a Protein Coding gene. Secretoglobin Family 2A Member 1 may bind androgens and other steroids, may also bind estramustine, a chemotherapeutic agent used for prostate cancer. May be under transcriptional regulation of steroid hormones. Gene Ontology (GO) annotations related to this gene include protein heterodimerization activity. An important paralog of this gene is SCGB2A2.

Recommended Dilution

WB: 1: 500 - 1: 2000

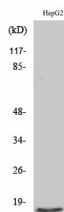
IHC: 1: 100 - 1: 300

IF: 1: 200 - 1: 1000

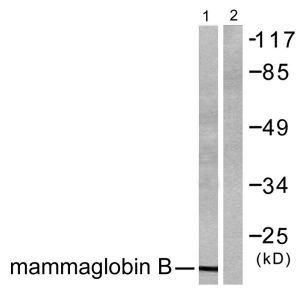
ELISA: 1: 20000

Not yet tested in other applications.

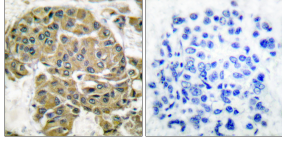
Images



Western Blot analysis of various cells using Mammaglobin B Polyclonal Antibody



Western blot analysis of lysates from HepG2 cells, using Mammaglobin B Antibody. The lane on the right is blocked with the synthesized peptide.



Immunohistochemistry analysis of paraffin-embedded human breast carcinoma tissue, using Mammaglobin B Antibody. The picture on the right is blocked with the synthesized peptide.

Storage

-20°C for one year

501 Changsheng S Rd, Nanhu Dist, Jiaxing, Zhejiang, China

Tel: 86 21 31007137 | E-mail: save@bt-laboratory.com | www.bt-laboratory.com