

## MAN1B1 Polyclonal Antibody

### Description

<b>Product type</b>	Primary Antibody
<b>Code</b>	BT-AP05197
<b>Host</b>	Rabbit
<b>Isotype</b>	IgG
<b>Size</b>	20ul, 50ul, 100ul
<b>Immunogen</b>	Synthesized peptide derived from MAN1B1 . at AA range: 100-180
<b>Mol wt</b>	79580
<b>Species reactivity</b>	Human
<b>Clonality</b>	Polyclonal
<b>Recommended application</b>	WB, ELISA
<b>Concentration</b>	1 mg/ml
<b>Full name</b>	MAN1B1 Antibody
<b>Synonyms</b>	MAN1B1; Endoplasmic reticulum mannosyl-oligosaccharide 1; 2-alpha-mannosidase; ER alpha-1,2-mannosidase; ER mannosidase 1; ERMan1; Man9GlcNAc2-specific-processing alpha-mannosidase; Mannosidase alpha

This product is for research use only, not for use in human, therapeutic or diagnostic procedure.

### Background

MAN1B1 encodes an enzyme belonging to the glycosyl hydrolase 47 family. This enzyme functions in N-glycan biosynthesis, and is a class I alpha-1,2-mannosidase that specifically converts Man9GlcNAc to Man8GlcNAc isomer B. It is required for N-glycan trimming to Man5-6GlcNAc2 in the endoplasmic-reticulum-associated degradation pathway. Mutations in this gene cause autosomal-recessive intellectual disability. Alternative splicing results in multiple transcript variants. A related pseudogene has been identified on chromosome 11.

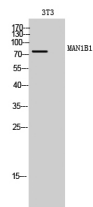
### Recommended Dilution

WB: 1: 500 - 1: 2000

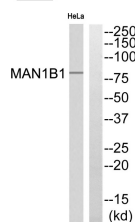
ELISA: 1: 10000

Not yet tested in other applications.

### Images



Western Blot analysis of 3T3 cells using MAN1B1 Polyclonal Antibody



Western blot analysis of MAN1B1 Antibody. The lane on the right is blocked with the MAN1B1 peptide.

## Storage

-20°C for one year

501 Changsheng S Rd, Nanhu Dist, Jiaxing, Zhejiang, China

Tel: 86 21 31007137 | E-mail: [save@bt-laboratory.com](mailto:save@bt-laboratory.com) | [www.bt-laboratory.com](http://www.bt-laboratory.com)