

MAPK Organizer 1 Polyclonal Antibody

Description

Product type	Primary Antibody
Code	BT-AP05209
Host	Rabbit
Isotype	IgG
Size	20ul, 50ul, 100ul
Immunogen	The antiserum was produced against synthesized peptide derived from the Internal region of human WDR83. AA range:141-190
Mol wt	34343
Species reactivity	Human, Mouse, Rat
Clonality	Polyclonal
Recommended application	WB, IHC-p, ELISA
Concentration	1 mg/ml
Full name	MAPK Organizer 1 Antibody
Synonyms	WDR83; MORG1; WD repeat domain-containing protein 83; Mitogen-activated protein kinase organizer 1; MAPK organizer 1

This product is for research use only, not for use in human, therapeutic or diagnostic procedure.

Background

WDR83 encodes a member of the WD-40 protein family. WD repeat domain 83 is proposed to function as a molecular scaffold for various multimeric protein complexes. The protein associates with several components of the extracellular signal-regulated kinase (ERK) pathway, and promotes ERK activity in response to serum or other signals. The protein also interacts with egl nine homolog 3 (EGLN3, also known as PHD3) and regulates expression of hypoxia-inducible factor 1, and has been purified as part of the spliceosome. Alternative splicing results in multiple transcript variants.

Recommended Dilution

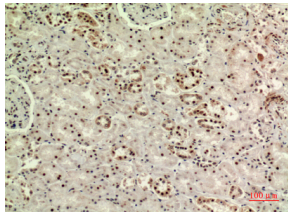
WB: 1: 500 - 1: 2000

IHC-p: 1: 100 - 1: 300

ELISA: 1: 20000

Not yet tested in other applications.

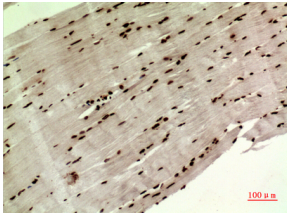
Images



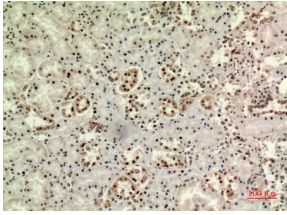
Immunohistochemical analysis of paraffin-embedded human-kidney, antibody was diluted at 1:100



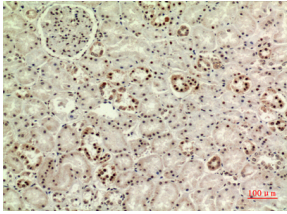
Western Blot analysis of MCF7 cells using MAPK Organizer 1 Polyclonal Antibody. Secondary antibody was diluted at 1:20000



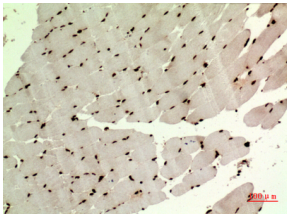
Immunohistochemical analysis of paraffin-embedded human-muscle, antibody was diluted at 1:100



Immunohistochemical analysis of paraffin-embedded human-kidney, antibody was diluted at 1:100



Immunohistochemical analysis of paraffin-embedded human-kidney, antibody was diluted at 1:100



Immunohistochemical analysis of paraffin-embedded human-muscle, antibody was diluted at 1:100

Storage

-20°C for one year

501 Changsheng S Rd, Nanhu Dist, Jiaxing, Zhejiang, China

Tel: 86 21 31007137 | E-mail: save@bt-laboratory.com | www.bt-laboratory.com