

MARCH1 Polyclonal Antibody

Description

Product type	Primary Antibody
Code	BT-AP05213
Host	Rabbit
Isotype	IgG
Size	20ul, 50ul, 100ul
Immunogen	Synthesized peptide derived from the Internal region of human 40603.
Mol wt	32308
Species reactivity	Human
Clonality	Polyclonal
Recommended application	IHC-p, WB, ELISA
Concentration	1 mg/ml
Full name	44256 Antibody
Synonyms	MARCH1; RNF171; E3 ubiquitin-protein ligase MARCH1; Membrane-associated RING finger protein 1; Membrane-associated RING-CH protein I; MARCH-I; RING finger protein 171

This product is for research use only, not for use in human, therapeutic or diagnostic procedure.

Background

MARCH1 (membrane associated ring-CH-type finger 1) is a member of the MARCH family of membrane-bound E3 ubiquitin ligases. MARCH proteins add ubiquitin (see MIM 191339) to target lysines in substrate proteins, thereby signaling their vesicular transport between membrane compartments. MARCH1 downregulates the surface expression of major histocompatibility complex (MHC) class II molecules (see MIM 142880) and other glycoproteins by directing them to the late endosomal/lysosomal compartment.

Recommended Dilution

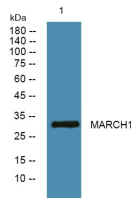
WB: 1: 500 - 2000

ELISA: 1: 40000

IHC: 1: 100 - 1: 300

Not yet tested in other applications.

Images



Western blot analysis of lysates from DU145 cells, primary antibody was diluted at 1:1000, 4° over night

Storage

-20°C for one year