

MARCH3 Polyclonal Antibody

Description

Product type	Primary Antibody
Code	BT-AP05215
Host	Rabbit
Isotype	IgG
Size	20ul, 50ul, 100ul
Immunogen	The antiserum was produced against synthesized peptide derived from human MARCH3. AA range:111-160
Mol wt	28504
Species reactivity	Human, Mouse, Rat, Monkey
Clonality	Polyclonal
Recommended application	WB, IHC-p, ELISA
Concentration	1 mg/ml
Full name	44258 Antibody
Synonyms	MARCH3; RNF173; E3 ubiquitin-protein ligase MARCH3; Membrane-associated RING finger protein 3; Membrane-associated RING-CH protein III; MARCH-III; RING finger protein 173

This product is for research use only, not for use in human, therapeutic or diagnostic procedure.

Background

MARCH3 encodes a member of the membrane-associated RING-CH (MARCH) family. The membrane associated ring-CH-type finger 3 is an E3 ubiquitin-protein ligase that may be involved in regulation of the endosomal transport pathway.

Recommended Dilution

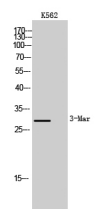
WB: 1: 500 - 1: 2000

IHC: 1: 100 - 1: 300

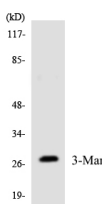
ELISA: 1: 40000

Not yet tested in other applications.

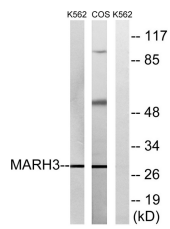
Images



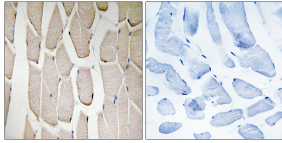
Western Blot analysis of K562 cells using MARCH3 Polyclonal Antibody



Western blot analysis of the lysates from RAW264.7 cells using MARCH3 antibody.



Western blot analysis of lysates from K562 and COS7 cells, using MARCH3 Antibody. The lane on the right is blocked with the synthesized peptide.



Immunohistochemistry analysis of paraffin-embedded human heart tissue, using MARCH3 Antibody. The picture on the right is blocked with the synthesized peptide.

Storage

-20°C for one year

501 Changsheng S Rd, Nanhu Dist, Jiaxing, Zhejiang, China

Tel: 86 21 31007137 | E-mail: save@bt-laboratory.com | www.bt-laboratory.com