

## MARCH4 Polyclonal Antibody

### Description

<b>Product type</b>	Primary Antibody
<b>Code</b>	BT-AP05216
<b>Host</b>	Rabbit
<b>Isotype</b>	IgG
<b>Size</b>	20ul, 50ul, 100ul
<b>Immunogen</b>	The antiserum was produced against synthesized peptide derived from human MARCH4. AA range:301-350
<b>Mol wt</b>	45528
<b>Species reactivity</b>	Human, Mouse
<b>Clonality</b>	Polyclonal
<b>Recommended application</b>	IHC-p, ELISA
<b>Concentration</b>	1 mg/ml
<b>Full name</b>	44259 Antibody
<b>Synonyms</b>	MARCH4; KIAA1399; RNF174; E3 ubiquitin-protein ligase MARCH4; Membrane-associated RING finger protein 4; Membrane-associated RING-CH protein IV; MARCH-IV; RING finger protein 174

**This product is for research use only, not for use in human, therapeutic or diagnostic procedure.**

### Background

MARCH4 is a member of the MARCH family of membrane-bound E3 ubiquitin ligases. MARCH enzymes add ubiquitin (see MIM 191339) to target lysines in substrate proteins, thereby signaling their vesicular transport between membrane compartments. MARCH4 reduces surface accumulation of several membrane glycoproteins by directing them to the endosomal compartment.

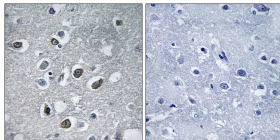
### Recommended Dilution

IHC: 1: 100 - 1: 300

ELISA: 1: 40000

Not yet tested in other applications.

### Images



Immunohistochemistry analysis of paraffin-embedded human brain tissue, using MARCH4 Antibody. The picture on the right is blocked with the synthesized peptide.

### Storage

-20°C for one year