

MARCH5 Polyclonal Antibody

Description

Product type	Primary Antibody
Code	BT-AP05217
Host	Rabbit
Isotype	IgG
Size	20ul, 50ul, 100ul
Immunogen	The antiserum was produced against synthesized peptide derived from human MARCH5. AA range:21-70
Mol wt	31232
Species reactivity	Human, Mouse, Rat
Clonality	Polyclonal
Recommended application	IF, WB, ELISA
Concentration	1 mg/ml
Full name	44260 Antibody
Synonyms	MARCH5; RNF153; E3 ubiquitin-protein ligase MARCH5; Membrane-associated RING finger protein 5; Membrane-associated RING-CH protein V; MARCH-V; Mitochondrial ubiquitin ligase; MITOL; RING finger protei

This product is for research use only, not for use in human, therapeutic or diagnostic procedure.

Background

MARCH5 is a ubiquitin ligase of the mitochondrial outer membrane that plays a role in the control of mitochondrial morphology by regulating mitofusin-2 (MFN2; MIM 608507) and DRP1 (DNM1L; MIM 603850).

Recommended Dilution

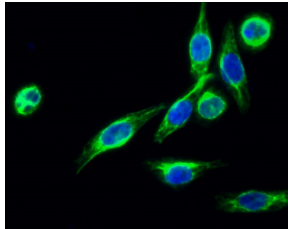
WB: 1: 500 - 2000

ELISA: 1: 40000

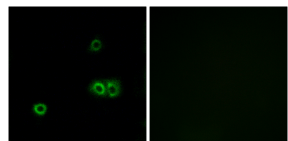
IF: 1: 200 - 1: 1000

Not yet tested in other applications.

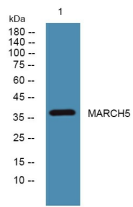
Images



Immunofluorescence analysis of HeLa cell. 1, MARCH5 Polyclonal Antibody (green) was diluted at 1:200 (4° overnight). 2, Goat Anti Rabbit Alexa Fluor 488 was diluted at 1:1000 (room temperature, 50min). 3 DAPI (blue) 10min.



Immunofluorescence analysis of A549 cells, using MARCH5 Antibody. The picture on the right is blocked with the synthesized peptide.



Western blot analysis of lysates from U2OS cells, primary antibody was diluted at 1:1000, 4° over night

Storage

-20°C for one year

501 Changsheng S Rd, Nanhu Dist, Jiaxing, Zhejiang, China

Tel: 86 21 31007137 | E-mail: save@bt-laboratory.com | www.bt-laboratory.com