

MARK2 Polyclonal Antibody

Description

Product type	Primary Antibody
Code	BT-AP05230
Host	Rabbit
Isotype	IgG
Size	20ul, 50ul, 100ul
Immunogen	The antiserum was produced against synthesized peptide derived from human MARK2. AA range:10-59
Mol wt	87911
Species reactivity	Human, Mouse, Rat, Monkey
Clonality	Polyclonal
Recommended application	WB, IF, ELISA
Concentration	1 mg/ml
Full name	MARK2 Antibody
Synonyms	MARK2; EMK1; Serine/threonine-protein kinase MARK2; ELKL motif kinase 1; EMK-1; MAP/microtubule affinity-regulating kinase 2; PAR1 homolog; PAR1 homolog b; Par-1b; Par1b

This product is for research use only, not for use in human, therapeutic or diagnostic procedure.

Background

MARK2 encodes a member of the Par-1 family of serine/threonine protein kinases. Serine/threonine-protein kinase MARK2 is an important regulator of cell polarity in epithelial and neuronal cells, and also controls the stability of microtubules through phosphorylation and inactivation of several microtubule-associated proteins. The protein localizes to cell membranes. Multiple transcript variants encoding different isoforms have been found for this gene.

Recommended Dilution

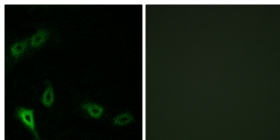
WB: 1: 500 - 1: 2000

IF: 1: 200 - 1: 1000

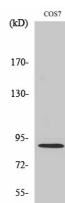
ELISA: 1: 20000

Not yet tested in other applications.

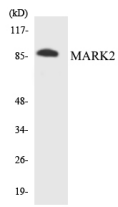
Images



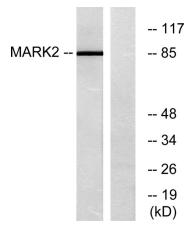
Immunofluorescence analysis of A549 cells, using MARK2 Antibody. The picture on the right is blocked with the synthesized peptide.



Western Blot analysis of various cells using MARK2 Polyclonal Antibody



Western blot analysis of the lysates from 293 cells using MARK2 antibody.



Western blot analysis of lysates from COS7 cells, using MARK2 Antibody. The lane on the right is blocked with the synthesized peptide.

Storage

-20°C for one year

501 Changsheng S Rd, Nanhu Dist, Jiaxing, Zhejiang, China

Tel: 86 21 31007137 | E-mail: save@bt-laboratory.com | www.bt-laboratory.com