

MARK4 Polyclonal Antibody

Description

Product type	Primary Antibody
Code	BT-AP05231
Host	Rabbit
Isotype	IgG
Size	20ul, 50ul, 100ul
Immunogen	The antiserum was produced against synthesized peptide derived from human MARK4. AA range:461-510
Mol wt	82520
Species reactivity	Human, Mouse
Clonality	Polyclonal
Recommended application	IF, ELISA
Concentration	1 mg/ml
Full name	MARK4 Antibody
Synonyms	MARK4; KIAA1860; MARKL1; MAP/microtubule affinity-regulating kinase 4; MAP/microtubule affinity-regulating kinase-like 1

This product is for research use only, not for use in human, therapeutic or diagnostic procedure.

Background

MARK4 (microtubule affinity regulating kinase 4) encodes a member of the microtubule affinity-regulating kinase family. These protein kinases phosphorylate microtubule-associated proteins and regulate the transition between stable and dynamic microtubules. The encoded protein is associated with the centrosome throughout mitosis and may be involved in cell cycle control. Expression of MARK4 is a potential marker for cancer, and the encoded protein may also play a role in Alzheimer's disease. Pseudogenes of MARK4 are located on both the short and long arm of chromosome 3. Alternatively spliced transcript variants encoding multiple isoforms have been observed for MARK4.

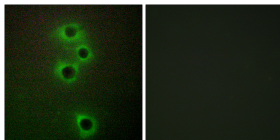
Recommended Dilution

IF: 1: 200 - 1: 1000

ELISA: 1: 40000

Not yet tested in other applications.

Images



Immunofluorescence analysis of A549 cells, using MARK4 Antibody. The picture on the right is blocked with the synthesized peptide.

Storage

-20°C for one year