

## Mas1-like Polyclonal Antibody

### Description

<b>Product type</b>	Primary Antibody
<b>Code</b>	BT-AP05233
<b>Host</b>	Rabbit
<b>Isotype</b>	IgG
<b>Size</b>	20ul, 50ul, 100ul
<b>Immunogen</b>	The antiserum was produced against synthesized peptide derived from human MAS1L. AA range:31-80
<b>Mol wt</b>	42411
<b>Species reactivity</b>	Human
<b>Clonality</b>	Polyclonal
<b>Recommended application</b>	IF, ELISA
<b>Concentration</b>	1 mg/ml
<b>Full name</b>	Mas1-like Antibody
<b>Synonyms</b>	MAS1L; MRG; Mas-related G-protein coupled receptor MRG; MAS-R; MAS1-like

**This product is for research use only, not for use in human, therapeutic or diagnostic procedure.**

### Background

MAS1L (MAS1 Proto-Oncogene Like, G Protein-Coupled Receptor) is a Protein Coding gene. Among its related pathways are Peptide ligand-binding receptors. GO annotations related to this gene include G-protein coupled receptor activity. An important paralog of this gene is MRGPRX4.

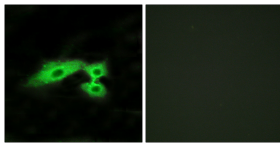
### Recommended Dilution

IF: 1: 200 - 1: 1000

ELISA: 1: 5000

Not yet tested in other applications.

### Images



Immunofluorescence analysis of HeLa cells, using MAS1L Antibody. The picture on the right is blocked with the synthesized peptide.

### Storage

-20°C for one year

501 Changsheng S Rd, Nanhu Dist, Jiaxing, Zhejiang, China

Tel: 86 21 31007137 | E-mail: [save@bt-laboratory.com](mailto:save@bt-laboratory.com) | [www.bt-laboratory.com](http://www.bt-laboratory.com)