

Mash2 Polyclonal Antibody

Description

Product type	Primary Antibody
Code	BT-AP05234
Host	Rabbit
Isotype	IgG
Size	20ul, 50ul, 100ul
Immunogen	Synthesized peptide derived from Mash2 . at AA range: 1-80
Mol wt	20185
Species reactivity	Human, Mouse, Rat
Clonality	Polyclonal
Recommended application	WB, ELISA
Concentration	1 mg/ml
Full name	Mash2 Antibody
Synonyms	ASCL2; BHLHA45; HASH2; Achaete-scute homolog 2; ASH-2; hASH2; Class A basic helix-loop-helix protein 45; BHLHa45; Mash2

This product is for research use only, not for use in human, therapeutic or diagnostic procedure.

Background

ASCL2 is a member of the basic helix-loop-helix (BHLH) family of transcription factors. It activates transcription by binding to the E box (5'-CANNTG-3'). Dimerization with other BHLH proteins is required for efficient DNA binding. Involved in the determination of the neuronal precursors in the peripheral nervous system and the central nervous system.

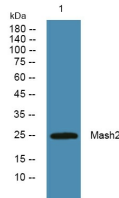
Recommended Dilution

WB: 1: 500 - 1: 2000

ELISA: 1: 40000

Not yet tested in other applications.

Images



Western blot analysis of lysates from A431 cells, primary antibody was diluted at 1:1000, 4°over night

Storage

-20°C for one year