

Maspin Polyclonal Antibody

Description

Product type	Primary Antibody
Code	BT-AP05237
Host	Rabbit
Isotype	IgG
Size	20ul, 50ul, 100ul
Immunogen	The antiserum was produced against synthesized peptide derived from human Serpin B5. AA range:91-140
Mol wt	42138
Species reactivity	Human, Mouse, Rat
Clonality	Polyclonal
Recommended application	WB, IHC-p, IF, ELISA
Concentration	1 mg/ml
Full name	Maspin Antibody
Synonyms	SERPINB5; PI5; Serpin B5; Maspin; Peptidase inhibitor 5; PI-5

This product is for research use only, not for use in human, therapeutic or diagnostic procedure.

Background

SERPINB5 is a Protein Coding gene. Serpin B5 is a Tumor suppressor. It blocks the growth, invasion, and metastatic properties of mammary tumors. As it does not undergo the S (stressed) to R (relaxed) conformational transition characteristic of active serpins, it exhibits no serine protease inhibitory activity. Diseases associated with SERPINB5 include mandibular cancer and laryngeal carcinoma. Among its related pathways are MicroRNAs in cancer and p53 Pathway (RnD). Gene Ontology (GO) annotations related to this gene include serine-type endopeptidase inhibitor activity. An important paralog of this gene is SERPINB12.

Recommended Dilution

WB: 1: 500 - 1: 2000

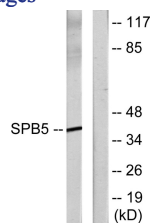
IHC: 1: 100 - 1: 300

IF: 1: 200 - 1: 1000

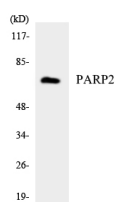
ELISA: 1: 20000

Not yet tested in other applications.

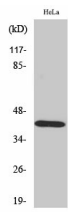
Images



Western blot analysis of lysates from HeLa cells, using Serpin B5 Antibody. The lane on the right is blocked with the synthesized peptide.



Western blot analysis of the lysates from HeLa cells using PARP2 antibody.



Western Blot analysis of various cells using Maspin Polyclonal Antibody

Storage

-20°C for one year

501 Changsheng S Rd, Nanhu Dist, Jiaxing, Zhejiang, China

Tel: 86 21 31007137 | E-mail: save@bt-laboratory.com | www.bt-laboratory.com