

MAST3 Polyclonal Antibody

Description

Product type	Primary Antibody
Code	BT-AP05240
Host	Rabbit
Isotype	IgG
Size	20ul, 50ul, 100ul
Immunogen	The antiserum was produced against synthesized peptide derived from human MAST3. AA range:1031-1080
Mol wt	143137
Species reactivity	Human, Mouse
Clonality	Polyclonal
Recommended application	WB, ELISA
Concentration	1 mg/ml
Full name	MAST3 Antibody
Synonyms	MAST3; KIAA0561; Microtubule-associated serine/threonine-protein kinase 3

This product is for research use only, not for use in human, therapeutic or diagnostic procedure.

Background

MAST3 (Microtubule Associated Serine/Threonine Kinase 3) is a Protein Coding gene. GO annotations related to this gene include transferase activity, transferring phosphorus-containing groups and protein tyrosine kinase activity. An important paralog of this gene is MAST4.

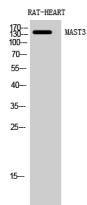
Recommended Dilution

WB: 1: 500 - 1: 2000

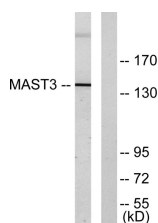
ELISA: 1: 10000

Not yet tested in other applications.

Images



Western Blot analysis of RAT-HEART cells using MAST3 Polyclonal Antibody diluted at 1:500



Western blot analysis of lysates from Jurkat cells, using MAST3 Antibody. The lane on the right is blocked with the synthesized peptide.

Storage

-20°C for one year

501 Changsheng S Rd, Nanhu Dist, Jiaxing, Zhejiang, China

Tel: 86 21 31007137 | E-mail: save@bt-laboratory.com | www.bt-laboratory.com