

Mat1 Polyclonal Antibody

Description

Product type	Primary Antibody
Code	BT-AP05243
Host	Rabbit
Isotype	IgG
Size	20ul, 50ul, 100ul
Immunogen	The antiserum was produced against synthesized peptide derived from human MAT1. AA range:91-140
Mol wt	35823
Species reactivity	Human, Mouse, Rat
Clonality	Polyclonal
Recommended application	WB, IHC-p, ELISA
Concentration	1 mg/ml
Full name	Mat1 Antibody
Synonyms	MNAT1; CAP35; MAT1; RNF66; CDK-activating kinase assembly factor MAT1; CDK7/cyclin-H assembly factor; Cyclin-G1-interacting protein; Menage a trois; RING finger protein 66; RING finger protein MAT1; p

This product is for research use only, not for use in human, therapeutic or diagnostic procedure.

Background

CDK-activating kinase assembly factor MAT1 encoded by MNAT1, along with cyclin H and CDK7, forms the CDK-activating kinase (CAK) enzymatic complex. This complex activates several cyclin-associated kinases and can also associate with TFIID to activate transcription by RNA polymerase II. Two transcript variants encoding different isoforms have been found for this gene.

Recommended Dilution

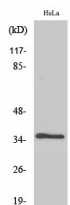
WB: 1: 500 - 1: 2000

IHC: 1: 100 - 1: 300

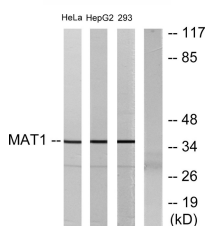
ELISA: 1: 20000

Not yet tested in other applications.

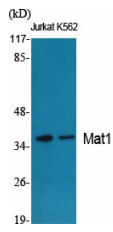
Images



Western Blot analysis of 293 cells using Mat1 Polyclonal Antibody



Western blot analysis of lysates from HeLa, HepG2, and 293 cells, using MAT1 Antibody. The lane on the right is blocked with the synthesized peptide.



Western Blot analysis of various cells using Mat1 Polyclonal Antibody

Storage

-20°C for one year

501 Changsheng S Rd, Nanhu Dist, Jiaxing, Zhejiang, China

Tel: 86 21 31007137 | E-mail: save@bt-laboratory.com | www.bt-laboratory.com