

## MaxiKBeta Polyclonal Antibody

### Description

<b>Product type</b>	Primary Antibody
<b>Code</b>	BT-AP05252
<b>Host</b>	Rabbit
<b>Isotype</b>	IgG
<b>Size</b>	20ul, 50ul, 100ul
<b>Immunogen</b>	The antiserum was produced against synthesized peptide derived from human MaxiKbeta. AA range:70-119
<b>Mol wt</b>	23949
<b>Species reactivity</b>	Human, Mouse, Rat
<b>Clonality</b>	Polyclonal
<b>Recommended application</b>	WB, IHC-p, ELISA
<b>Concentration</b>	1 mg/ml
<b>Full name</b>	MaxiKBeta Antibody
<b>Synonyms</b>	KCNMB4; Calcium-activated potassium channel subunit beta-4; BK channel subunit beta-4; BKbeta4; Hbeta4; Calcium-activated potassium channel; subfamily M subunit beta-4; Charybdotoxin receptor subunit

**This product is for research use only, not for use in human, therapeutic or diagnostic procedure.**

### Background

MaxiK channels are large conductance, voltage and calcium-sensitive potassium channels which are fundamental to the control of smooth muscle tone and neuronal excitability. MaxiK channels can be formed by 2 subunits: the pore-forming alpha subunit and the modulatory beta subunit. Calcium-activated potassium channel subunit beta-4 encoded by KCNMB4 is an auxiliary beta subunit which slows activation kinetics, leads to steeper calcium sensitivity, and shifts the voltage range of current activation to more negative potentials than does the beta 1 subunit.

### Recommended Dilution

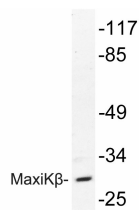
WB: 1: 500 - 1: 2000

IHC: 1: 100 - 1: 300

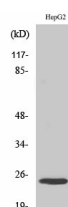
ELISA: 1: 20000

Not yet tested in other applications.

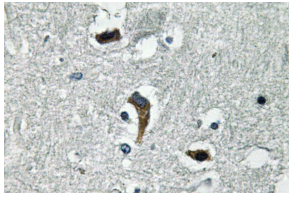
### Images



Western blot analysis of lysate from HepG2 cells, using MaxiK $\beta$  antibody.



Western Blot analysis of various cells using MaxiK $\beta$  Polyclonal Antibody



Immunohistochemistry analysis of MaxiK $\beta$  antibody in paraffin-embedded human brain tissue.

### Storage

-20°C for one year

501 Changsheng S Rd, Nanhu Dist, Jiaxing, Zhejiang, China

Tel: 86 21 31007137 | E-mail: [save@bt-laboratory.com](mailto:save@bt-laboratory.com) | [www.bt-laboratory.com](http://www.bt-laboratory.com)