

MaxiKBeta2 Polyclonal Antibody

Description

Product type	Primary Antibody
Code	BT-AP05253
Host	Rabbit
Isotype	IgG
Size	20ul, 50ul, 100ul
Immunogen	The antiserum was produced against synthesized peptide derived from human KCNMB2. AA range:151-200
Mol wt	27130
Species reactivity	Human, Mouse, Rat
Clonality	Polyclonal
Recommended application	WB, IHC-p, ELISA
Concentration	1 mg/ml
Full name	MaxiKBeta2 Antibody
Synonyms	KCNMB2; Calcium-activated potassium channel subunit beta-2; BK channel subunit beta-2; BKbeta2; Hbeta2; Calcium-activated potassium channel; subfamily M subunit beta-2; Charybdotoxin receptor subunit

This product is for research use only, not for use in human, therapeutic or diagnostic procedure.

Background

MaxiK channels are large conductance, voltage and calcium-sensitive potassium channels which are fundamental to the control of smooth muscle tone and neuronal excitability. MaxiK channels can be formed by 2 subunits: the pore-forming alpha subunit and the modulatory beta subunit. Calcium-activated potassium channel subunit beta-2 encoded by KCNMB2 is an auxiliary beta subunit which decreases the activation time of MaxiK alpha subunit currents. Alternative splicing results in multiple transcript variants of this gene. Additional variants are discussed in the literature, but their full length nature has not been described.

Recommended Dilution

WB: 1: 500 - 1: 2000

IHC: 1: 100 - 1: 300

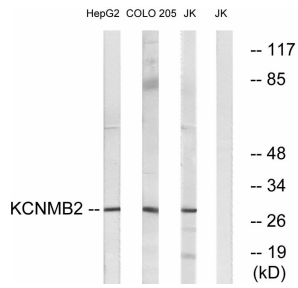
ELISA: 1: 20000

Not yet tested in other applications.

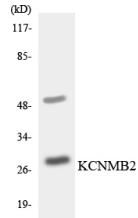
Images



Western Blot analysis of various cells using MaxiK β 2 Polyclonal Antibody diluted at 1:500



Western blot analysis of lysates from Jurkat, COLO, and HepG2 cells, using KCNMB2 Antibody.
The lane on the right is blocked with the synthesized peptide.



Western blot analysis of the lysates from HepG2 cells using KCNMB2 antibody.

Storage

-20°C for one year

501 Changsheng S Rd, Nanhu Dist, Jiaxing, Zhejiang, China

Tel: 86 21 31007137 | E-mail: save@bt-laboratory.com | www.bt-laboratory.com