

MBD3 Polyclonal Antibody

Description

Product type	Primary Antibody
Code	BT-AP05256
Host	Rabbit
Isotype	IgG
Size	20ul, 50ul, 100ul
Immunogen	The antiserum was produced against synthesized peptide derived from human MBD3. AA range:221-270
Mol wt	32844
Species reactivity	Human, Mouse
Clonality	Polyclonal
Recommended application	WB, ELISA
Concentration	1 mg/ml
Full name	MBD3 Antibody
Synonyms	MBD3; Methyl-CpG-binding domain protein 3; Methyl-CpG-binding protein MBD3

This product is for research use only, not for use in human, therapeutic or diagnostic procedure.

Background

DNA methylation is the major modification of eukaryotic genomes and plays an essential role in mammalian development. MBD3 belongs to a family of nuclear proteins which are characterized by the presence of a methyl-CpG binding domain (MBD). Methyl-CpG-binding domain protein 3 is a subunit of the NuRD, a multisubunit complex containing nucleosome remodeling and histone deacetylase activities. Unlike the other family members, the encoded protein is not capable of binding to methylated DNA. The protein mediates the association of metastasis-associated protein 2 with the core histone deacetylase complex. Alternative splicing results in multiple transcript variants of this gene.

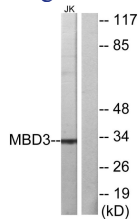
Recommended Dilution

WB: 1: 500 - 1: 2000

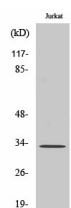
ELISA: 1: 10000

Not yet tested in other applications.

Images



Western blot analysis of lysates from Jurkat cells, using MBD3 Antibody. The lane on the right is blocked with the synthesized peptide.



Western Blot analysis of various cells using MBD3 Polyclonal Antibody

Storage

-20°C for one year

501 Changsheng S Rd, Nanhu Dist, Jiaxing, Zhejiang, China

Tel: 86 21 31007137 | E-mail: save@bt-laboratory.com | www.bt-laboratory.com