

MBL-C Polyclonal Antibody

Description

Product type	Primary Antibody
Code	BT-AP05258
Host	Rabbit
Isotype	IgG
Size	20ul, 50ul, 100ul
Immunogen	The antiserum was produced against synthesized peptide derived from human MBL2. AA range:27-76
Mol wt	26144
Species reactivity	Human, Mouse
Clonality	Polyclonal
Recommended application	WB, ELISA
Concentration	1 mg/ml
Full name	MBL-C Antibody
Synonyms	MBL2; COLEC1; MBL; Mannose-binding protein C; MBP-C; Collectin-1; MBP1; Mannan-binding protein; Mannose-binding lectin

This product is for research use only, not for use in human, therapeutic or diagnostic procedure.

Background

MBL2 (mannose binding lectin 2) encodes the soluble mannose-binding lectin or mannose-binding protein found in serum. The protein encoded belongs to the collectin family and is an important element in the innate immune system. The protein recognizes mannose and N-acetylglucosamine on many microorganisms, and is capable of activating the classical complement pathway. Deficiencies of MBL2 have been associated with susceptibility to autoimmune and infectious diseases.

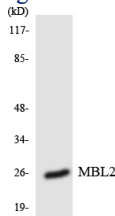
Recommended Dilution

WB: 1: 500 - 1: 2000

ELISA: 1: 40000

Not yet tested in other applications.

Images



Western blot analysis of the lysates from COLO205 cells using MBL2 antibody.

Storage

-20°C for one year