

## MC5-R Polyclonal Antibody

### Description

|                                |  |
|--------------------------------|--|
| <b>Product type</b>            | Primary Antibody   |
| <b>Code</b>                    | BT-AP05265   |
| <b>Host</b>                    | Rabbit   |
| <b>Isotype</b>                 | IgG  |
| <b>Size</b>                    | 20ul, 50ul, 100ul  |
| <b>Immunogen</b>               | The antiserum was produced against synthesized peptide derived from human MC5R. AA range:271-320 |
| <b>Mol wt</b>                  | 36601  |
| <b>Species reactivity</b>      | Human, Mouse, Rat  |
| <b>Clonality</b>               | Polyclonal   |
| <b>Recommended application</b> | WB, IF, ELISA  |
| <b>Concentration</b>           | 1 mg/ml  |
| <b>Full name</b>               | MC5-R Antibody   |
| <b>Synonyms</b>                | MC5R; Melanocortin receptor 5; MC5-R; MC-2   |

This product is for research use only, not for use in human, therapeutic or diagnostic procedure.

### Background

MC5R encodes a member of the seven-pass transmembrane G protein-coupled melanocortin receptor protein family that stimulate cAMP signal transduction. Melanocortin receptor 5 is a receptor for melanocyte-stimulating hormone and adrenocorticotrophic hormone and is suggested to play a role in sebum generation.

### Recommended Dilution

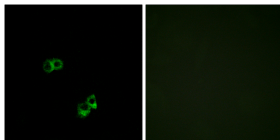
WB: 1: 500 - 1: 2000

IF: 1: 200 - 1: 1000

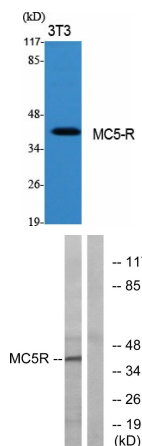
ELISA: 1: 40000

Not yet tested in other applications.

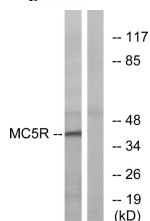
### Images



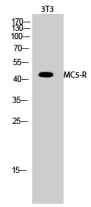
Immunofluorescence analysis of MCF7 cells, using MC5R Antibody. The picture on the right is blocked with the synthesized peptide.



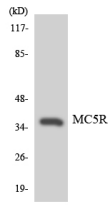
Western Blot analysis of various cells using MC5-R Polyclonal Antibody



Western blot analysis of lysates from K562 cells, using MC5R Antibody. The lane on the right is blocked with the synthesized peptide.



Western Blot analysis of 3T3 cells using MC5-R Polyclonal Antibody



Western blot analysis of the lysates from HeLa cells using MC5R antibody.

### Storage

-20°C for one year

501 Changsheng S Rd, Nanhu Dist, Jiaxing, Zhejiang, China

Tel: 86 21 31007137 | E-mail: [save@bt-laboratory.com](mailto:save@bt-laboratory.com) | [www.bt-laboratory.com](http://www.bt-laboratory.com)