

M-cadherin Polyclonal Antibody

Description

Product type	Primary Antibody
Code	BT-AP05267
Host	Rabbit
Isotype	IgG
Size	20ul, 50ul, 100ul
Immunogen	The antiserum was produced against synthesized peptide derived from human CDH15. AA range:81-130
Mol wt	88916
Species reactivity	Human, Mouse, Rat
Clonality	Polyclonal
Recommended application	WB, IHC-p, ELISA
Concentration	1 mg/ml
Full name	M-cadherin Antibody
Synonyms	CDH15; CDH14; CDH3; Cadherin-15; Cadherin-14; Muscle cadherin; M-cadherin

This product is for research use only, not for use in human, therapeutic or diagnostic procedure.

Background

CDH15 is a member of the cadherin superfamily of genes, encoding calcium-dependent intercellular adhesion glycoproteins. Cadherins consist of an extracellular domain containing 5 cadherin domains, a transmembrane region, and a conserved cytoplasmic domain. Transcripts from this particular cadherin are expressed in myoblasts and upregulated in myotubule-forming cells. Cadherin-15 is thought to be essential for the control of morphogenetic processes, specifically myogenesis, and may provide a trigger for terminal muscle cell differentiation.

Recommended Dilution

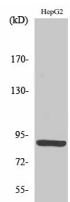
WB: 1: 500 - 1: 2000

IHC: 1: 100 - 1: 300

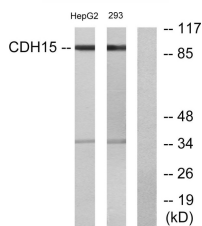
ELISA: 1: 10000

Not yet tested in other applications.

Images



Western Blot analysis of various cells using M-cadherin Polyclonal Antibody diluted at 1:500



Western blot analysis of lysates from HepG2 and 293 cells, using CDH15 Antibody. The lane on the right is blocked with the synthesized peptide.

Storage

-20°C for one year

501 Changsheng S Rd, Nanhu Dist, Jiaxing, Zhejiang, China

Tel: 86 21 31007137 | E-mail: save@bt-laboratory.com | www.bt-laboratory.com