

## TRPC5 Rabbit Polyclonal Antibody

### Description

<b>Product type</b>	Primary Antibody
<b>Code</b>	BT-AP05269
<b>Host</b>	Rabbit
<b>Isotype</b>	IgG
<b>Size</b>	20ul, 50ul, 100ul
<b>Immunogen</b>	Synthesized peptide derived from human TRPC5
<b>Mol wt</b>	N/A
<b>Species reactivity</b>	Human, Mouse
<b>Clonality</b>	Polyclonal
<b>Recommended application</b>	WB
<b>Concentration</b>	1 mg/ml
<b>Full name</b>	TRPC5
<b>Synonyms</b>	TRPC5; Short transient receptor potential channel 5; TrpC5; Transient receptor protein 5; TRP-5; hTRP-5; hTRP5

This product is for research use only, not for use in human, therapeutic or diagnostic procedure.

### Background

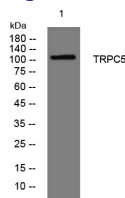
This gene belongs to the transient receptor family. It encodes one of the seven mammalian TRPC (transient receptor potential channel) proteins. The encoded protein is a multi-pass membrane protein and is thought to form a receptor-activated non-selective calcium permeant cation channel. The protein is active alone or as a heteromultimeric assembly with TRPC1| TRPC3| and TRPC4. It also interacts with multiple proteins including calmodulin| CABP1| enkurin| Na(+)-H<sup>+</sup> exchange regulatory factor (NHERF )| interferon-induced GTP-binding protein (MX1)| ring finger protein 24 (RNF24)| and SEC14 domain and spectrin repeat-containing protein 1 (SESTD1).

### Recommended Dilution

WB: 1: 500 - 1: 2000

Not yet tested in other applications.

### Images



Western blot analysis of lysates from K562 cells, primary antibody was diluted at 1:1000, 4°C overnight

### Storage

-20°C for 1 year