

MCH-2R Polyclonal Antibody

Description

Product type	Primary Antibody
Code	BT-AP05271
Host	Rabbit
Isotype	IgG
Size	20ul, 50ul, 100ul
Immunogen	The antiserum was produced against synthesized peptide derived from human MCHR2. AA range:291-340
Mol wt	38849
Species reactivity	Human
Clonality	Polyclonal
Recommended application	WB, IF, ELISA
Concentration	1 mg/ml
Full name	MCH-2R Antibody
Synonyms	MCHR2; GPR145; SLT; Melanin-concentrating hormone receptor 2; MCH receptor 2; MCH-R2; MCHR-2; G-protein coupled receptor 145; GPRv17; MCH-2R; MCH2; MCH2R

This product is for research use only, not for use in human, therapeutic or diagnostic procedure.

Background

MCHR2 (Melanin Concentrating Hormone Receptor 2) is a Protein Coding gene. Among its related pathways are Peptide ligand-binding receptors and Interleukin-3, 5 and GM-CSF signaling. GO annotations related to this gene include G-protein coupled receptor activity. An important paralog of this gene is GALR2.

Recommended Dilution

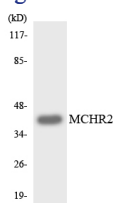
WB: 1: 500 - 1: 2000

IF: 1: 200 - 1: 1000

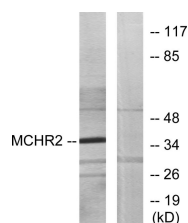
ELISA: 1: 5000

Not yet tested in other applications.

Images



Western blot analysis of the lysates from HeLa cells using MCHR2 antibody.



Western blot analysis of lysates from HUVEC cells, using MCHR2 Antibody. The lane on the right is blocked with the synthesized peptide.

Storage

-20°C for one year

501 Changsheng S Rd, Nanhu Dist, Jiaxing, Zhejiang, China

Tel: 86 21 31007137 | E-mail: save@bt-laboratory.com | www.bt-laboratory.com