

MCP-2 Polyclonal Antibody

Description

Product type	Primary Antibody
Code	BT-AP05284
Host	Rabbit
Isotype	IgG
Size	20ul, 50ul, 100ul
Immunogen	The antiserum was produced against synthesized peptide derived from the C-terminal region of human CCL8. AA range:50-99
Mol wt	11246
Species reactivity	Human
Clonality	Polyclonal
Recommended application	WB, ELISA
Concentration	1 mg/ml
Full name	MCP-2 Antibody
Synonyms	CCL8; MCP2; SCYA10; SCYA8; C-C motif chemokine 8; HC14; Monocyte chemoattractant protein 2; Monocyte chemotactic protein 2; MCP-2; Small-inducible cytokine A8

This product is for research use only, not for use in human, therapeutic or diagnostic procedure.

Background

CCL8 is one of several chemokine genes clustered on the q-arm of chromosome 17. Chemokines form a superfamily of secreted proteins involved in immunoregulatory and inflammatory processes. The superfamily is divided into four subfamilies based on the arrangement of N-terminal cysteine residues of the mature peptide. This chemokine is a member of the CC subfamily which is characterized by two adjacent cysteine residues. This cytokine displays chemotactic activity for monocytes, lymphocytes, basophils and eosinophils. By recruiting leukocytes to sites of inflammation this cytokine may contribute to tumor-associated leukocyte infiltration and to the antiviral state against HIV infection.

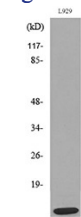
Recommended Dilution

WB: 1: 500 - 1: 2000

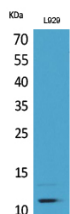
ELISA: 1: 20000

Not yet tested in other applications.

Images



Western blot analysis of lysate from L929 cells, using CCL8 Antibody.



Western Blot analysis of L929 cells using MCP-2 Polyclonal Antibody. Secondary antibody was diluted at 1:20000

Storage

-20°C for one year

501 Changsheng S Rd, Nanhu Dist, Jiaxing, Zhejiang, China

Tel: 86 21 31007137 | E-mail: save@bt-laboratory.com | www.bt-laboratory.com