

MCT12 Polyclonal Antibody

Description

Product type	Primary Antibody
Code	BT-AP05288
Host	Rabbit
Isotype	IgG
Size	20ul, 50ul, 100ul
Immunogen	The antiserum was produced against synthesized peptide derived from human MOT12. AA range:115-164
Mol wt	53075
Species reactivity	Human, Mouse
Clonality	Polyclonal
Recommended application	WB, IHC-p, ELISA
Concentration	1 mg/ml
Full name	MCT12 Antibody
Synonyms	SLC16A12; MCT12; Monocarboxylate transporter 12; MCT 12; Solute carrier family 16 member 12

This product is for research use only, not for use in human, therapeutic or diagnostic procedure.

Background

SLC16A12 encodes a transmembrane transporter that likely plays a role in monocarboxylic acid transport. A mutation in this gene has been associated with juvenile cataracts with microcornea and renal glucosuria.

Recommended Dilution

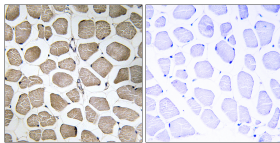
WB: 1: 500 - 1: 2000

IHC: 1: 100 - 1: 300

ELISA: 1: 20000

Not yet tested in other applications.

Images



Immunohistochemistry analysis of paraffin-embedded human skeletal muscle tissue, using MOT12 Antibody. The picture on the right is blocked with the synthesized peptide.

Storage

-20°C for one year

501 Changsheng S Rd, Nanhu Dist, Jiaxing, Zhejiang, China

Tel: 86 21 31007137 | E-mail: save@bt-laboratory.com | www.bt-laboratory.com