

MCT8 Polyclonal Antibody

Description

Product type	Primary Antibody
Code	BT-AP05292
Host	Rabbit
Isotype	IgG
Size	20ul, 50ul, 100ul
Immunogen	The antiserum was produced against synthesized peptide derived from human SLC16A2. AA range:112-161
Mol wt	59511
Species reactivity	Human, Mouse, Rat
Clonality	Polyclonal
Recommended application	WB, ELISA
Concentration	1 mg/ml
Full name	MCT8 Antibody
Synonyms	SLC16A2; MCT8; XPCT; Monocarboxylate transporter 8; MCT 8; Monocarboxylate transporter 7; MCT 7; Solute carrier family 16 member 2; X-linked PEST-containing transporter

This product is for research use only, not for use in human, therapeutic or diagnostic procedure.

Background

SLC16A2 (solute carrier family 16 member 2) encodes an integral membrane protein that functions as a transporter of thyroid hormone. The encoded protein facilitates the cellular importation of thyroxine (T4), triiodothyronine (T3), reverse triiodothyronine (rT3) and diiodothyronine (T2). SLC16A2 is expressed in many tissues and likely plays an important role in the development of the central nervous system. Loss of function mutations in SLC16A2 are associated with psychomotor retardation in males while females exhibit no neurological defects and more moderate thyroid-deficient phenotypes. SLC16A2 is subject to X-chromosome inactivation. Mutations in SLC16A2 are the cause of Allan-Herndon-Dudley syndrome.

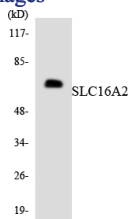
Recommended Dilution

WB: 1: 500 - 1: 2000

ELISA: 1: 40000

Not yet tested in other applications.

Images



Western blot analysis of the lysates from HT-29 cells using SLC16A2 antibody.

Storage

-20°C for one year