

MDFI Polyclonal Antibody

Description

Product type	Primary Antibody
Code	BT-AP05295
Host	Rabbit
Isotype	IgG
Size	20ul, 50ul, 100ul
Immunogen	The antiserum was produced against synthesized peptide derived from human MDFI. AA range:103-152
Mol wt	25029
Species reactivity	Human, Mouse
Clonality	Polyclonal
Recommended application	WB, ELISA
Concentration	1 mg/ml
Full name	MDFI Antibody
Synonyms	MDFI; MyoD family inhibitor; Myogenic repressor I-mf

This product is for research use only, not for use in human, therapeutic or diagnostic procedure.

Background

MyoD family inhibitor is a transcription factor that negatively regulates other myogenic family proteins. Studies of the mouse homolog, I-mf, show that it interferes with myogenic factor function by masking nuclear localization signals and preventing DNA binding. Knockout mouse studies show defects in the formation of vertebrae and ribs that also involve cartilage formation in these structures.

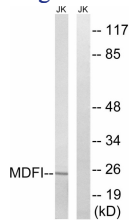
Recommended Dilution

WB: 1: 500 - 1: 2000

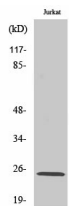
ELISA: 1: 10000

Not yet tested in other applications.

Images



Western blot analysis of lysates from Jurkat cells, using MDFI Antibody. The lane on the right is blocked with the synthesized peptide.



Western Blot analysis of various cells using MDFI Polyclonal Antibody

Storage

-20°C for one year

