

MDM1 Polyclonal Antibody

Description

Product type	Primary Antibody
Code	BT-AP05299
Host	Rabbit
Isotype	IgG
Size	20ul, 50ul, 100ul
Immunogen	The antiserum was produced against synthesized peptide derived from human MDM1. AA range:665-714
Mol wt	80735
Species reactivity	Human, Mouse, Rat
Clonality	Polyclonal
Recommended application	WB, ELISA
Concentration	1 mg/ml
Full name	MDM1 Antibody
Synonyms	MDM1; Nuclear protein MDM1

This product is for research use only, not for use in human, therapeutic or diagnostic procedure.

Background

MDM1 (Mdm1 nuclear protein) encodes a nuclear protein similar to the mouse double minute 1 protein. The mouse gene is located in double minute (DM) chromatin particles, is amplified in the mouse transformed 3T3 cell line, and the encoded protein is able to bind to p53. Alternatively spliced transcript variants encoding different isoforms have been found for MDM1.

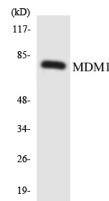
Recommended Dilution

WB: 1: 500 - 1: 2000

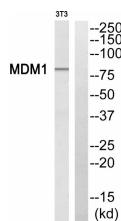
ELISA: 1: 5000

Not yet tested in other applications.

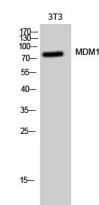
Images



Western blot analysis of the lysates from HepG2 cells using MDM1 antibody.



Western blot analysis of MDM1 Antibody. The lane on the right is blocked with the MDM1 peptide.



Western Blot analysis of 3T3 cells using MDM1 Polyclonal Antibody cells nucleus.

Storage

-20°C for one year

501 Changsheng S Rd, Nanhu Dist, Jiaxing, Zhejiang, China

Tel: 86 21 31007137 | E-mail: save@bt-laboratory.com | www.bt-laboratory.com