

## MDM2 Polyclonal Antibody

### Description

Product type	Primary Antibody
Code	BT-AP05301
Host	Rabbit
Isotype	IgG
Size	20ul, 50ul, 100ul
Immunogen	The antiserum was produced against synthesized peptide derived from human MDM2. AA range:151-200
Mol wt	55233
Species reactivity	Human
Clonality	Polyclonal
Recommended application	IHC-p, IF, WB, ELISA
Concentration	1 mg/ml
Full name	MDM2 Antibody
Synonyms	MDM2; E3 ubiquitin-protein ligase Mdm2; Double minute 2 protein; Hdm2; Oncoprotein Mdm2; p53-binding protein Mdm2

This product is for research use only, not for use in human, therapeutic or diagnostic procedure.

### Background

MDM2 encodes a nuclear-localized E3 ubiquitin ligase. The encoded protein can promote tumor formation by targeting tumor suppressor proteins, such as p53, for proteasomal degradation. MDM2 is itself transcriptionally-regulated by p53. Overexpression or amplification of this locus is detected in a variety of different cancers. There is a pseudogene for this gene on chromosome 2. Alternative splicing results in a multitude of transcript variants, many of which may be expressed only in tumor cells.

### Recommended Dilution

WB: 1: 500 - 2000

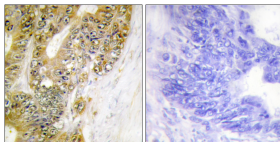
IF: 1: 200 - 1: 1000

ELISA: 1: 5000

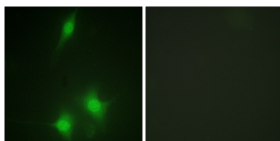
IHC: 1: 100 - 1: 300

Not yet tested in other applications.

### Images



Immunohistochemistry analysis of paraffin-embedded human colon carcinoma tissue, using MDM2 Antibody. The picture on the right is blocked with the synthesized peptide.



Immunofluorescence analysis of NIH/3T3 cells, using MDM2 Antibody. The picture on the right is blocked with the synthesized peptide.

### Storage

-20°C for one year

501 Changsheng S Rd, Nanhu Dist, Jiaxing, Zhejiang, China

Tel: 86 21 31007137 | E-mail: [save@bt-laboratory.com](mailto:save@bt-laboratory.com) | [www.bt-laboratory.com](http://www.bt-laboratory.com)