

MDMX Polyclonal Antibody

Description

Product type	Primary Antibody
Code	BT-AP05304
Host	Rabbit
Isotype	IgG
Size	20ul, 50ul, 100ul
Immunogen	The antiserum was produced against synthesized peptide derived from human MDM4. AA range:336-385
Mol wt	54864
Species reactivity	Human, Mouse, Rat
Clonality	Polyclonal
Recommended application	WB, IHC-p, ELISA
Concentration	1 mg/ml
Full name	MDMX Antibody
Synonyms	MDM4; MDMX; Protein Mdm4; Double minute 4 protein; Mdm2-like p53-binding protein; Protein Mdmx; p53-binding protein Mdm4

This product is for research use only, not for use in human, therapeutic or diagnostic procedure.

Background

MDM4 encodes a nuclear protein that contains a p53 binding domain at the N-terminus and a RING finger domain at the C-terminus, and shows structural similarity to p53-binding protein MDM2. Both proteins bind the p53 tumor suppressor protein and inhibit its activity, and have been shown to be overexpressed in a variety of human cancers. However, unlike MDM2 which degrades p53, this protein inhibits p53 by binding its transcriptional activation domain. This protein also interacts with MDM2 protein via the RING finger domain, and inhibits the latter's degradation. So this protein can reverse MDM2-targeted degradation of p53, while maintaining suppression of p53 transactivation and apoptotic functions. Alternatively spliced transcript variants encoding different isoforms have been noted for this gene.

Recommended Dilution

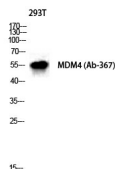
WB: 1: 500 - 1: 2000

IHC: 1: 100 - 1: 300

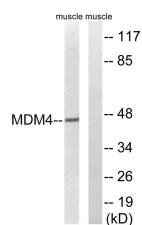
ELISA: 1: 40000

Not yet tested in other applications.

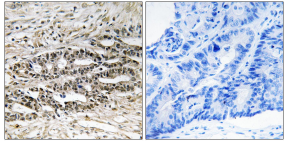
Images



Western Blot analysis of 293T cells using MDMX Polyclonal Antibody diluted at 1:1000 cells nucleus.



Western blot analysis of lysates from rat muscle cells, using MDM4 Antibody. The lane on the right is blocked with the synthesized peptide.



Immunohistochemistry analysis of paraffin-embedded human colon carcinoma tissue, using MDM4 Antibody. The picture on the right is blocked with the synthesized peptide.

Storage

-20°C for one year

501 Changsheng S Rd, Nanhu Dist, Jiaxing, Zhejiang, China

Tel: 86 21 31007137 | E-mail: save@bt-laboratory.com | www.bt-laboratory.com