

## Med18 Polyclonal Antibody

### Description

|                                |                                                                                                  |
|--------------------------------|--------------------------------------------------------------------------------------------------|
| <b>Product type</b>            | Primary Antibody                                                                                 |
| <b>Code</b>                    | BT-AP05312                                                                                       |
| <b>Host</b>                    | Rabbit                                                                                           |
| <b>Isotype</b>                 | IgG                                                                                              |
| <b>Size</b>                    | 20ul, 50ul, 100ul                                                                                |
| <b>Immunogen</b>               | The antiserum was produced against synthesized peptide derived from human MED18. AA range:70-119 |
| <b>Mol wt</b>                  | 23663                                                                                            |
| <b>Species reactivity</b>      | Human, Mouse, Rat                                                                                |
| <b>Clonality</b>               | Polyclonal                                                                                       |
| <b>Recommended application</b> | WB, ELISA                                                                                        |
| <b>Concentration</b>           | 1 mg/ml                                                                                          |
| <b>Full name</b>               | Med18 Antibody                                                                                   |
| <b>Synonyms</b>                | MED18; Mediator of RNA polymerase II transcription subunit 18; Mediator complex subunit 18; p28b |

**This product is for research use only, not for use in human, therapeutic or diagnostic procedure.**

### Background

MED18 is a component of the Mediator complex, which is a coactivator for DNA-binding factors that activate transcription via RNA polymerase II.

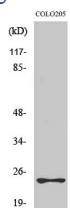
### Recommended Dilution

WB: 1: 500 - 1: 2000

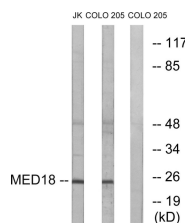
ELISA: 1: 40000

Not yet tested in other applications.

### Images



Western Blot analysis of various cells using Med18 Polyclonal Antibody cells nucleus.



Western blot analysis of lysates from COLO and Jurkat cells, using MED18 Antibody. The lane on the right is blocked with the synthesized peptide.

### Storage

-20°C for one year