

MEF-2 Polyclonal Antibody

Description

Product type	Primary Antibody
Code	BT-AP05324
Host	Rabbit
Isotype	IgG
Size	20ul, 50ul, 100ul
Immunogen	The antiserum was produced against synthesized peptide derived from human MEF2A. AA range:279-328
Mol wt	54811
Species reactivity	Human, Mouse, Rat
Clonality	Polyclonal
Recommended application	WB, IHC-p, ELISA
Concentration	1 mg/ml
Full name	MEF-2 Antibody
Synonyms	MEF2A; MEF2; Myocyte-specific enhancer factor 2A; Serum response factor-like protein 1

This product is for research use only, not for use in human, therapeutic or diagnostic procedure.

Background

Myocyte enhancer factor 2A encoded by MEF2A is a DNA-binding transcription factor that activates many muscle-specific, growth factor-induced, and stress-induced genes. Myocyte enhancer factor 2A can act as a homodimer or as a heterodimer and is involved in several cellular processes, including muscle development, neuronal differentiation, cell growth control, and apoptosis. Defects in MEF2A could be a cause of autosomal dominant coronary artery disease 1 with myocardial infarction (ADCAD1). Several transcript variants encoding different isoforms have been found for MEF2A.

Recommended Dilution

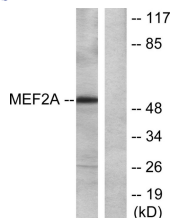
WB: 1: 500 - 1: 2000

IHC: 1: 100 - 1: 300

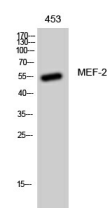
ELISA: 1: 20000

Not yet tested in other applications.

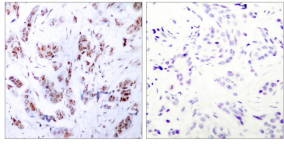
Images



Western blot analysis of lysates from NIH/3T3 cells, treated with PMA, using MEF2A Antibody. The lane on the right is blocked with the synthesized peptide.



Western Blot analysis of 453 cells using MEF-2 Polyclonal Antibody diluted at 1:1000 cells nucleus.



Immunohistochemistry analysis of paraffin-embedded human breast carcinoma tissue, using MEF2A Antibody. The picture on the right is blocked with the synthesized peptide.

Storage

-20°C for one year

501 Changsheng S Rd, Nanhu Dist, Jiaxing, Zhejiang, China

Tel: 86 21 31007137 | E-mail: save@bt-laboratory.com | www.bt-laboratory.com