

MEF2C Polyclonal Antibody

Description

Product type	Primary Antibody
Code	BT-AP05326
Host	Rabbit
Isotype	IgG
Size	20ul, 50ul, 100ul
Immunogen	The antiserum was produced against synthesized peptide derived from human MEF2C. AA range:411-460
Mol wt	51221
Species reactivity	Human, Mouse
Clonality	Polyclonal
Recommended application	IHC-p, ELISA
Concentration	1 mg/ml
Full name	MEF2C Antibody
Synonyms	MEF2C; Myocyte-specific enhancer factor 2C

This product is for research use only, not for use in human, therapeutic or diagnostic procedure.

Background

MEF2C encodes a member of the MADS box transcription enhancer factor 2 (MEF2) family of proteins, which play a role in myogenesis. The encoded protein, MEF2 polypeptide C, has both trans-activating and DNA binding activities. This protein may play a role in maintaining the differentiated state of muscle cells. Mutations and deletions at this locus have been associated with severe mental retardation, stereotypic movements, epilepsy, and cerebral malformation. Alternatively spliced transcript variants have been described.

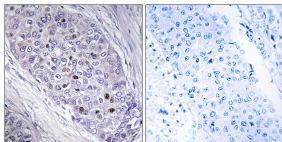
Recommended Dilution

IHC: 1: 100 - 1: 300

ELISA: 1: 40000

Not yet tested in other applications.

Images



Immunohistochemistry analysis of paraffin-embedded human breast carcinoma tissue, using MEF2C Antibody. The picture on the right is blocked with the synthesized peptide.

Storage

-20°C for one year