

Megsin Polyclonal Antibody

Description

Product type	Primary Antibody
Code	BT-AP05330
Host	Rabbit
Isotype	IgG
Size	20ul, 50ul, 100ul
Immunogen	The antiserum was produced against synthesized peptide derived from human SERPINB7. AA range:111-160
Mol wt	42905
Species reactivity	Human
Clonality	Polyclonal
Recommended application	WB, ELISA
Concentration	1 mg/ml
Full name	Megsin Antibody
Synonyms	SERPINB7; Serpin B7; Megsin; TP55

This product is for research use only, not for use in human, therapeutic or diagnostic procedure.

Background

SERPINB7 (serpin family B member 7) encodes a member of a family of proteins which function as protease inhibitors. Expression of SERPINB7 is upregulated in IgA nephropathy and mutations have been found to cause palmoplantar keratoderma, Nagashima type. Alternative splicing results in multiple transcript variants.

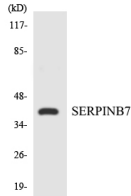
Recommended Dilution

WB: 1: 500 - 1: 2000

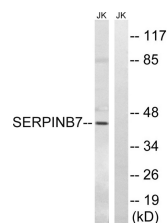
ELISA: 1: 20000

Not yet tested in other applications.

Images



Western blot analysis of the lysates from Jurkat cells using SERPINB7 antibody.



Western blot analysis of lysates from Jurkat cells, using SERPINB7 Antibody. The lane on the right is blocked with the synthesized peptide.

Storage

-20°C for one year

501 Changsheng S Rd, Nanhu Dist, Jiaxing, Zhejiang, China

Tel: 86 21 31007137 | E-mail: save@bt-laboratory.com | www.bt-laboratory.com