

MEK Kinase-1 Polyclonal Antibody

Description

Product type	Primary Antibody
Code	BT-AP05334
Host	Rabbit
Isotype	IgG
Size	20ul, 50ul, 100ul
Immunogen	The antiserum was produced against synthesized peptide derived from human MAP3K1. AA range:181-230
Mol wt	161289
Species reactivity	Human, Mouse, Rat
Clonality	Polyclonal
Recommended application	WB, IF, ELISA
Concentration	1 mg/ml
Full name	MEK Kinase-1 Antibody
Synonyms	MAP3K1; MAPKKK1; MEKK; MEKK1; Mitogen-activated protein kinase kinase kinase 1; MAPK/ERK kinase kinase 1; MEK kinase 1; MEKK 1

This product is for research use only, not for use in human, therapeutic or diagnostic procedure.

Background

The protein encoded by MAP3K1 is a serine/threonine kinase and is part of some signal transduction cascades, including the ERK and JNK kinase pathways as well as the NF-kappa-B pathway. The encoded protein is activated by autophosphorylation and requires magnesium as a cofactor in phosphorylating other proteins. This protein has E3 ligase activity conferred by a plant homeodomain (PHD) in its N-terminus and phospho-kinase activity conferred by a kinase domain in its C-terminus.

Recommended Dilution

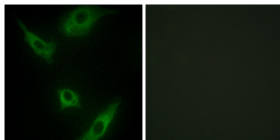
WB: 1: 500 - 1: 2000

IF: 1: 200 - 1: 1000

ELISA: 1: 5000

Not yet tested in other applications.

Images



Immunofluorescence analysis of HeLa cells, using MAP3K1 Antibody. The picture on the right is blocked with the synthesized peptide.

Storage

-20°C for one year