

## MEK Kinase-6 Polyclonal Antibody

### Description

Product type	Primary Antibody
Code	BT-AP05337
Host	Rabbit
Isotype	IgG
Size	20ul, 50ul, 100ul
Immunogen	The antiserum was produced against synthesized peptide derived from human MAP3K6. AA range:281-330
Mol wt	142608
Species reactivity	Human, Mouse
Clonality	Polyclonal
Recommended application	IHC-p, ELISA
Concentration	1 mg/ml
Full name	MEK Kinase-6 Antibody
Synonyms	MAP3K6; ASK2; MAPKKK6; MEKK6; Mitogen-activated protein kinase kinase kinase 6; Apoptosis signal-regulating kinase 2

**This product is for research use only, not for use in human, therapeutic or diagnostic procedure.**

### Background

MAP3K6 (mitogen-activated protein kinase kinase kinase 6) encodes a serine/threonine protein kinase that forms a component of protein kinase-mediated signal transduction cascades. The encoded kinase participates in the regulation of vascular endothelial growth factor (VEGF) expression. Alternative splicing results in multiple transcript variants.

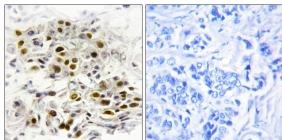
### Recommended Dilution

IHC: 1: 100 - 1: 300

ELISA: 1: 5000

Not yet tested in other applications.

### Images



Immunohistochemistry analysis of paraffin-embedded human breast carcinoma tissue, using MAP3K6 Antibody. The picture on the right is blocked with the synthesized peptide.

### Storage

-20°C for one year

501 Changsheng S Rd, Nanhu Dist, Jiaxing, Zhejiang, China

Tel: 86 21 31007137 | E-mail: [save@bt-laboratory.com](mailto:save@bt-laboratory.com) | [www.bt-laboratory.com](http://www.bt-laboratory.com)