

MEK-1 Polyclonal Antibody

Description

Product type	Primary Antibody
Code	BT-AP05341
Host	Rabbit
Isotype	IgG
Size	20ul, 50ul, 100ul
Immunogen	The antiserum was produced against synthesized peptide derived from human MEK1. AA range:261-310
Mol wt	43439
Species reactivity	Human, Mouse, Rat
Clonality	Polyclonal
Recommended application	WB, IHC-p, ELISA
Concentration	1 mg/ml
Full name	MEK-1 Antibody
Synonyms	MAP2K1; MEK1; PRKMK1; Dual specificity mitogen-activated protein kinase kinase 1; MAP kinase kinase 1; MAPKK 1; MKK1; ERK activator kinase 1; MAPK/ERK kinase 1; MEK 1

This product is for research use only, not for use in human, therapeutic or diagnostic procedure.

Background

Dual specificity mitogen-activated protein kinase kinase 1 encoded by MAP2K1 is a member of the dual specificity protein kinase family, which acts as a mitogen-activated protein (MAP) kinase kinase. MAP kinases, also known as extracellular signal-regulated kinases (ERKs), act as an integration point for multiple biochemical signals. Dual specificity mitogen-activated protein kinase kinase 1 lies upstream of MAP kinases and stimulates the enzymatic activity of MAP kinases upon wide variety of extra- and intracellular signals. As an essential component of MAP kinase signal transduction pathway, this kinase is involved in many cellular processes such as proliferation, differentiation, transcription regulation and development.

Recommended Dilution

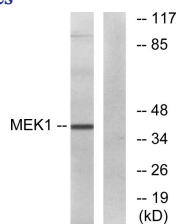
WB: 1: 500 - 1: 2000

IHC: 1: 100 - 1: 300

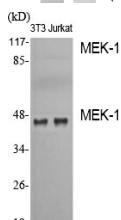
ELISA: 1: 5000

Not yet tested in other applications.

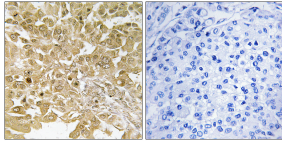
Images



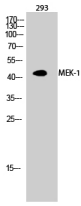
Western blot analysis of lysates from K562 cells, treated with, using MEK1 Antibody. The lane on the right is blocked with the synthesized peptide.



Western Blot analysis of various cells using MEK-1 Polyclonal Antibody diluted at 1:2000



Immunohistochemistry analysis of paraffin-embedded human breast carcinoma tissue, using MEK1 Antibody. The picture on the right is blocked with the synthesized peptide.



Western Blot analysis of 293 cells using MEK-1 Polyclonal Antibody diluted at 1:2000

Storage

-20°C for one year

501 Changsheng S Rd, Nanhu Dist, Jiaxing, Zhejiang, China

Tel: 86 21 31007137 | E-mail: save@bt-laboratory.com | www.bt-laboratory.com