

MEK-1 Polyclonal Antibody

Description

Product type	Primary Antibody
Code	BT-AP05342
Host	Rabbit
Isotype	IgG
Size	20ul, 50ul, 100ul
Immunogen	Synthesized peptide derived from human MEK-1 around the non-phosphorylation site of T286.
Mol wt	43439
Species reactivity	Human, Mouse, Rat
Clonality	Polyclonal
Recommended application	WB, IHC-p
Concentration	1 mg/ml
Full name	MEK-1 Antibody
Synonyms	MAP2K1; MEK1; PRKMK1; Dual specificity mitogen-activated protein kinase kinase 1; MAP kinase kinase 1; MAPKK 1; MKK1; ERK activator kinase 1; MAPK/ERK kinase 1; MEK 1

This product is for research use only, not for use in human, therapeutic or diagnostic procedure.

Background

The protein encoded by MAP2K1 (mitogen-activated protein kinase kinase 1) is a member of the dual specificity protein kinase family, which acts as a mitogen-activated protein (MAP) kinase kinase. MAP kinases, also known as extracellular signal-regulated kinases (ERKs), act as an integration point for multiple biochemical signals. This protein kinase lies upstream of MAP kinases and stimulates the enzymatic activity of MAP kinases upon wide variety of extra- and intracellular signals. As an essential component of MAP kinase signal transduction pathway, this kinase is involved in many cellular processes such as proliferation, differentiation, transcription regulation and development.

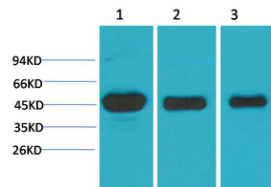
Recommended Dilution

WB: 1: 500 - 1: 2000

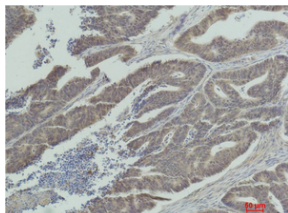
IHC-p: 1: 50 - 300

Not yet tested in other applications.

Images



Western blot analysis of 1) Hela, 2) 3T3, 3) PC12 using MEK-1 Polyclonal Antibody. Secondary antibody was diluted at 1:20000



Immunohistochemical analysis of paraffin-embedded Human Colon Carcinoma using MEK-1 Polyclonal Antibody.

Storage

-20°C for one year

501 Changsheng S Rd, Nanhu Dist, Jiaxing, Zhejiang, China

Tel: 86 21 31007137 | E-mail: save@bt-laboratory.com | www.bt-laboratory.com