

MEK-1/2 Polyclonal Antibody

Description

Product type	Primary Antibody
Code	BT-AP05344
Host	Rabbit
Isotype	IgG
Size	20ul, 50ul, 100ul
Immunogen	The antiserum was produced against synthesized peptide derived from human MEK1/2. AA range:193-242
Mol wt	43439
Species reactivity	Human, Mouse, Rat
Clonality	Polyclonal
Recommended application	WB, IHC-p, ELISA
Concentration	1 mg/ml
Full name	MEK-1/2 Antibody
Synonyms	MAP2K1; MEK1; PRKMK1; Dual specificity mitogen-activated protein kinase kinase 1; MAP kinase kinase 1; MAPKK 1; MKK1; ERK activator kinase 1; MAPK/ERK kinase 1; MEK 1; MAP2K2; MEK2; MKK2; PRKMK2; Dual

This product is for research use only, not for use in human, therapeutic or diagnostic procedure.

Background

Dual specificity mitogen-activated protein kinase kinase 2 encoded by MAP2K2 is a dual specificity protein kinase that belongs to the MAP kinase kinase family. Dual specificity mitogen-activated protein kinase kinase 2 is known to play a critical role in mitogen growth factor signal transduction. It phosphorylates and thus activates MAPK1/ERK2 and MAPK2/ERK3. The activation of this kinase itself is dependent on the Ser/Thr phosphorylation by MAP kinase kinase kinases. Mutations in this gene cause cardiofaciocutaneous syndrome (CFC syndrome), a disease characterized by heart defects, mental retardation, and distinctive facial features similar to those found in Noonan syndrome. The inhibition or degradation of this kinase is also found to be involved in the pathogenesis of Yersinia and anthrax. A pseudogene, which is located on chromosome 7, has been identified for this gene.

Recommended Dilution

IHC: 1: 50 - 300

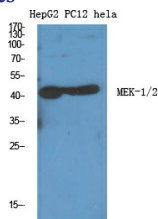
WB: 1: 500 - 1: 2000

IHC: 1: 100 - 1: 300

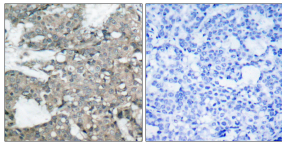
ELISA: 1: 20000

Not yet tested in other applications.

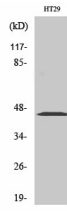
Images



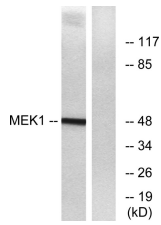
Western Blot analysis of various cells using MEK-1/2 Polyclonal Antibody diluted at 1:1000



Immunohistochemistry analysis of paraffin-embedded human breast carcinoma tissue, using MEK1/2 Antibody. The picture on the right is blocked with the synthesized peptide.



Western Blot analysis of HT29 cells using MEK-1/2 Polyclonal Antibody diluted at 1:1000



Western blot analysis of lysates from Jurkat cells, treated with UV, using MEK1/2 Antibody. The lane on the right is blocked with the synthesized peptide.

Storage

-20°C for one year

501 Changsheng S Rd, Nanhu Dist, Jiaxing, Zhejiang, China

Tel: 86 21 31007137 | E-mail: save@bt-laboratory.com | www.bt-laboratory.com