

MEK-6 Polyclonal Antibody

Description

Product type	Primary Antibody
Code	BT-AP05356
Host	Rabbit
Isotype	IgG
Size	20ul, 50ul, 100ul
Immunogen	Synthesized peptide derived from MEK-6 . at AA range: 150-230
Mol wt	37492
Species reactivity	Human, Mouse, Rat
Clonality	Polyclonal
Recommended application	WB, IHC-p, ELISA
Concentration	1 mg/ml
Full name	MEK-6 Antibody
Synonyms	MAP2K6; MEK6; MKK6; PRKMK6; SKK3; Dual specificity mitogen-activated protein kinase kinase 6; MAP kinase kinase 6; MAPKK 6; MAPK/ERK kinase 6; MEK 6; Stress-activated protein kinase kinase 3; SAPK kin

This product is for research use only, not for use in human, therapeutic or diagnostic procedure.

Background

MAP2K6 (mitogen-activated protein kinase kinase 6) encodes a member of the dual specificity protein kinase family, which functions as a mitogen-activated protein (MAP) kinase kinase. MAP kinases, also known as extracellular signal-regulated kinases (ERKs), act as an integration point for multiple biochemical signals. This protein phosphorylates and activates p38 MAP kinase in response to inflammatory cytokines or environmental stress. As an essential component of p38 MAP kinase mediated signal transduction pathway, MAP2K6 is involved in many cellular processes such as stress induced cell cycle arrest, transcription activation and apoptosis.

Recommended Dilution

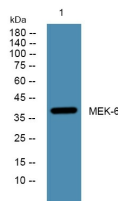
WB: 1: 500 - 1: 2000

IHC: 1: 100 - 1: 300

ELISA: 1: 5000

Not yet tested in other applications.

Images



Western blot analysis of lysates from KB cells, primary antibody was diluted at 1:1000, 4°over night

Storage

-20°C for one year