

MEK-6 Polyclonal Antibody

Description

Product type	Primary Antibody
Code	BT-AP05357
Host	Rabbit
Isotype	IgG
Size	20ul, 50ul, 100ul
Immunogen	The antiserum was produced against synthesized peptide derived from human MAP2K6. AA range:1-50
Mol wt	37492
Species reactivity	Human, Mouse, Rat
Clonality	Polyclonal
Recommended application	WB, IHC-p, IF, ELISA
Concentration	1 mg/ml
Full name	MEK-6 Antibody
Synonyms	MAP2K6; MEK6; MKK6; PRKMK6; SKK3; Dual specificity mitogen-activated protein kinase kinase 6; MAP kinase kinase 6; MAPKK 6; MAPK/ERK kinase 6; MEK 6; Stress-activated protein kinase kinase 3; SAPK kin

This product is for research use only, not for use in human, therapeutic or diagnostic procedure.

Background

MAP2K6 encodes a member of the dual specificity protein kinase family, which functions as a mitogen-activated protein (MAP) kinase kinase. MAP kinases, also known as extracellular signal-regulated kinases (ERKs), act as an integration point for multiple biochemical signals. Dual specificity mitogen-activated protein kinase kinase 6 phosphorylates and activates p38 MAP kinase in response to inflammatory cytokines or environmental stress. As an essential component of p38 MAP kinase mediated signal transduction pathway, this gene is involved in many cellular processes such as stress induced cell cycle arrest, transcription activation and apoptosis.

Recommended Dilution

WB: 1: 500 - 1: 2000

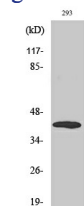
IHC: 1: 100 - 1: 300

IF: 1: 200 - 1: 1000

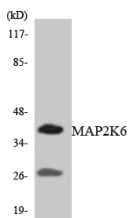
ELISA: 1: 10000

Not yet tested in other applications.

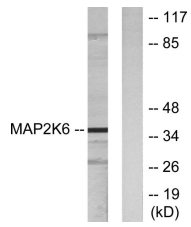
Images



Western Blot analysis of various cells using MEK-6 Polyclonal Antibody



Western blot analysis of the lysates from HepG2 cells using MAP2K6 antibody.



Western blot analysis of lysates from 293 cells, using MAP2K6 Antibody. The lane on the right is blocked with the synthesized peptide.

Storage

-20°C for one year

501 Changsheng S Rd, Nanhu Dist, Jiaxing, Zhejiang, China

Tel: 86 21 31007137 | E-mail: save@bt-laboratory.com | www.bt-laboratory.com