

MEL-1B-R Polyclonal Antibody

Description

Product type	Primary Antibody
Code	BT-AP05361
Host	Rabbit
Isotype	IgG
Size	20ul, 50ul, 100ul
Immunogen	The antiserum was produced against synthesized peptide derived from human MTR1B. AA range:301-350
Mol wt	40188
Species reactivity	Human
Clonality	Polyclonal
Recommended application	WB, ELISA
Concentration	1 mg/ml
Full name	MEL-1B-R Antibody
Synonyms	MTNR1B; Melatonin receptor type 1B; Mel-1B-R; Mel1b receptor

This product is for research use only, not for use in human, therapeutic or diagnostic procedure.

Background

MTNR1B encodes one of two high affinity forms of a receptor for melatonin, the primary hormone secreted by the pineal gland. Melatonin receptor type 1B is an integral membrane protein that is a G-protein coupled, 7-transmembrane receptor. It is found primarily in the retina and brain although this detection requires RT-PCR. It is thought to participate in light-dependent functions in the retina and may be involved in the neurobiological effects of melatonin.

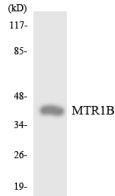
Recommended Dilution

WB: 1: 500 - 1: 2000

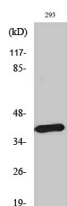
ELISA: 1: 5000

Not yet tested in other applications.

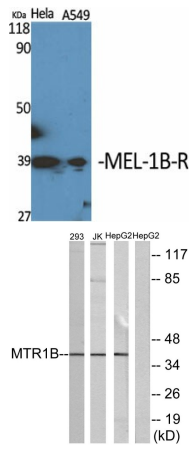
Images



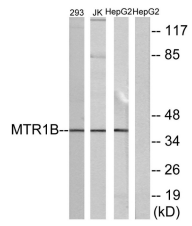
Western blot analysis of the lysates from HeLa cells using MTR1B antibody.



Western Blot analysis of HepG2 cells using MEL-1B-R Polyclonal Antibody diluted at 1:1000



Western Blot analysis of various cells using MEL-1B-R Polyclonal Antibody diluted at 1:1000



Western blot analysis of lysates from 293, Jurkat, and HepG2 cells, using MTR1B Antibody. The lane on the right is blocked with the synthesized peptide.

Storage

-20°C for one year

501 Changsheng S Rd, Nanhu Dist, Jiaxing, Zhejiang, China

Tel: 86 21 31007137 | E-mail: save@bt-laboratory.com | www.bt-laboratory.com