

## Melan-A Polyclonal Antibody

### Description

<b>Product type</b>	Primary Antibody
<b>Code</b>	BT-AP05362
<b>Host</b>	Rabbit
<b>Isotype</b>	IgG
<b>Size</b>	20ul, 50ul, 100ul
<b>Immunogen</b>	The antiserum was produced against synthesized peptide derived from human MART-1. AA range:41-90
<b>Mol wt</b>	13157
<b>Species reactivity</b>	Human
<b>Clonality</b>	Polyclonal
<b>Recommended application</b>	WB, IHC-p, ELISA
<b>Concentration</b>	1 mg/ml
<b>Full name</b>	Melan-A Antibody
<b>Synonyms</b>	MLANA; MART1; Melanoma antigen recognized by T-cells 1; MART-1; Antigen LB39-AA; Antigen SK29-AA; Protein Melan-A

This product is for research use only, not for use in human, therapeutic or diagnostic procedure.

### Background

Involved in melanosome biogenesis by ensuring the stability of GPR143. Plays a vital role in the expression, stability, trafficking, and processing of melanocyte protein PMEL, which is critical to the formation of stage II melanosomes.

### Recommended Dilution

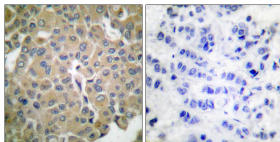
WB: 1: 500 - 1: 2000

IHC: 1: 100 - 1: 300

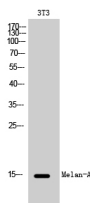
ELISA: 1: 40000

Not yet tested in other applications.

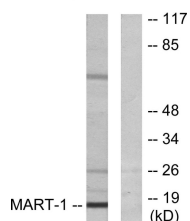
### Images



Immunohistochemistry analysis of paraffin-embedded human breast carcinoma tissue, using MART-1 Antibody. The picture on the right is blocked with the synthesized peptide.



Western Blot analysis of 3T3 cells using Melan-A Polyclonal Antibody



Western blot analysis of lysates from NIH/3T3 cells, using MART-1 Antibody. The lane on the right is blocked with the synthesized peptide.

## Storage

-20°C for one year

501 Changsheng S Rd, Nanhu Dist, Jiaxing, Zhejiang, China

Tel: 86 21 31007137 | E-mail: [save@bt-laboratory.com](mailto:save@bt-laboratory.com) | [www.bt-laboratory.com](http://www.bt-laboratory.com)