

Melanopsin Polyclonal Antibody

Description

| | |
|--------------------------------|--|
| Product type | Primary Antibody |
| Code | BT-AP05363 |
| Host | Rabbit |
| Isotype | IgG |
| Size | 20ul, 50ul, 100ul |
| Immunogen | The antiserum was produced against synthesized peptide derived from human OPN4. AA range:429-478 |
| Mol wt | 52635 |
| Species reactivity | Human |
| Clonality | Polyclonal |
| Recommended application | WB, IF, ELISA |
| Concentration | 1 mg/ml |
| Full name | Melanopsin Antibody |
| Synonyms | OPN4; MOP; Melanopsin; Opsin-4 |

This product is for research use only, not for use in human, therapeutic or diagnostic procedure.

Background

Opsins are members of the guanine nucleotide-binding protein (G protein)-coupled receptor superfamily. OPN4 encodes a photoreceptive opsin protein melanopsin that is expressed within the ganglion and amacrine cell layers of the retina. In mouse, retinal ganglion cell axons expressing this gene projected to the suprachiasmatic nucleus and other brain nuclei involved in circadian photoentrainment. In mouse, this protein is coupled to a transient receptor potential (TRP) ion channel through a G protein signaling pathway and produces a physiologic light response via membrane depolarization and increased intracellular calcium. Melanopsin functions as a sensory photopigment and may also have photoisomerase activity. Experiments with knockout mice indicate that this gene attenuates, but does not abolish, photoentrainment. Alternative splicing results in multiple transcript variants encoding different isoforms.

Recommended Dilution

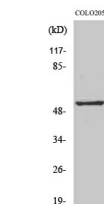
WB: 1: 500 - 1: 2000

IF: 1: 200 - 1: 1000

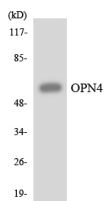
ELISA: 1: 5000

Not yet tested in other applications.

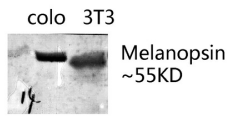
Images



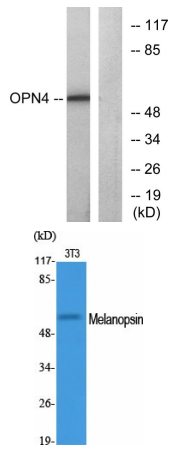
Western Blot analysis of COLO205 cells using Melanopsin Polyclonal Antibody



Western blot analysis of the lysates from HeLa cells using OPN4 antibody.



Western blot analysis of various lysis using Melanopsin Polyclonal Antibody. Secondary antibody was diluted at 1:20000



Western blot analysis of lysates from COLO cells, using OPN4 Antibody. The lane on the right is blocked with the synthesized peptide.

Western Blot analysis of various cells using Melanopsin Polyclonal Antibody

Storage

-20°C for one year

501 Changsheng S Rd, Nanhu Dist, Jiaxing, Zhejiang, China

Tel: 86 21 31007137 | E-mail: save@bt-laboratory.com | www.bt-laboratory.com